

Free 7.5' USGS Topographic maps for Section 106

1. Go to: <https://viewer.nationalmap.gov/advanced-viewer/>
2. Left click on “Basemap Gallery”

Step #2. Click on this image to access the “Basemap Gallery”

U.S. Department of the Interior | U.S. Geological Survey
URL: <https://viewer.nationalmap.gov/advanced-viewer/> Page Last Modified: 07-Apr-17
Page Contact Information: [The National Map](#)

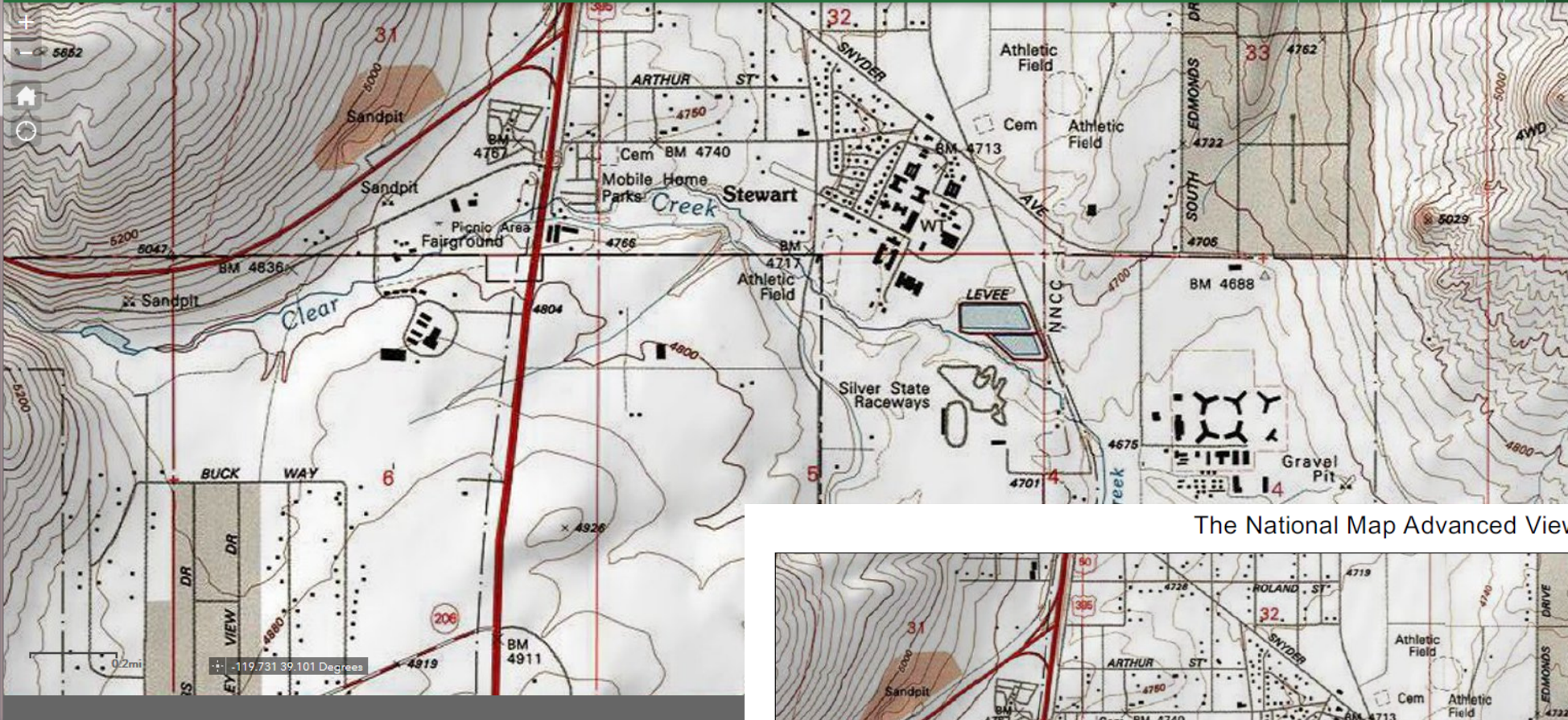
The screenshot shows the USGS National Map viewer interface. The main map displays the United States with state boundaries and major cities. A callout box points to the 'Basemap Gallery' on the right side of the interface. The gallery contains a grid of map styles including 'Light Gray Canvas', 'National Geographic', 'OpenStreetMap', 'Streets', 'Topographic', 'USA Topo Maps', 'USGS National Map', 'USGS Imagery Topo', 'USGS Imagery Only', and 'USGS Shaded Relief Only'. A second callout box points to the 'USA Topo Maps' option. A third callout box points to the search bar at the top right of the interface, which contains the text 'Find a place or place name'. The interface also includes a header with the USGS logo and 'The National Map' text, and a footer with contact information and a 'USA.gov' logo.

Step 3. Select "USA Topo Maps" from the "Basemap Gallery"

Step 4. Search for project area or "APE" with GPS/GIS data, town name, etc.

U.S. Department of the Interior | U.S. Geological Survey
URL: <https://viewer.nationalmap.gov/advanced-viewer/> Page Last Modified: 07-Apr-17
Page Contact Information: [The National Map](#)

3. Select "USA Topo Maps" from the Basemap Gallery
4. Search for project area or "area of potential effect (APE)"
5. Once project area/APE is located you can use this internet tool to illustrate the boundaries of the APE or you print the map image and draw, by hand, the boundaries.



Print

Map Title: The National Map Advanced Viewer

Layout: A3 Portrait

Format: PDF

[Advanced](#) [Print](#)

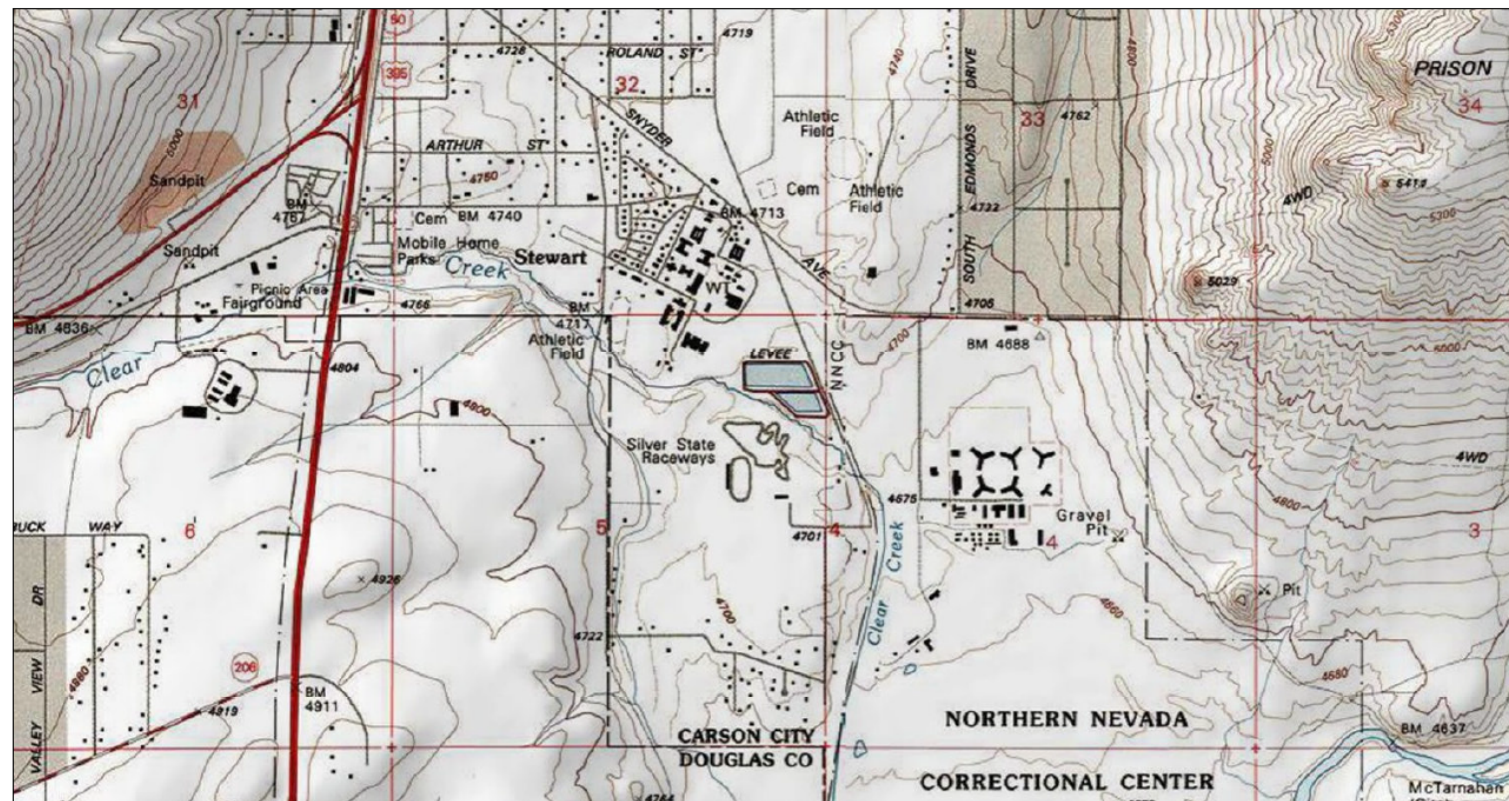
The National Map Advanced Viewer

[U.S. Department of the Interior](#) | [U.S. Geological Survey](#)

Examples

Above: To print, select Print button. Then select layout and format - A3 Portrait and A3 Landscape work well.
Note: "Map Only" will not generate in Firefox.

Right: Sample .pdf - the website adds scale and date etc. automatically.



May 5, 2017

1:18,056
0 0.175 0.35 0.7 mi
0 0.35 0.7 1.4 km

Copyright © 2013 National Geographic Society, Inc.