



Explore Report Protect

Archaeology Damages Nevada

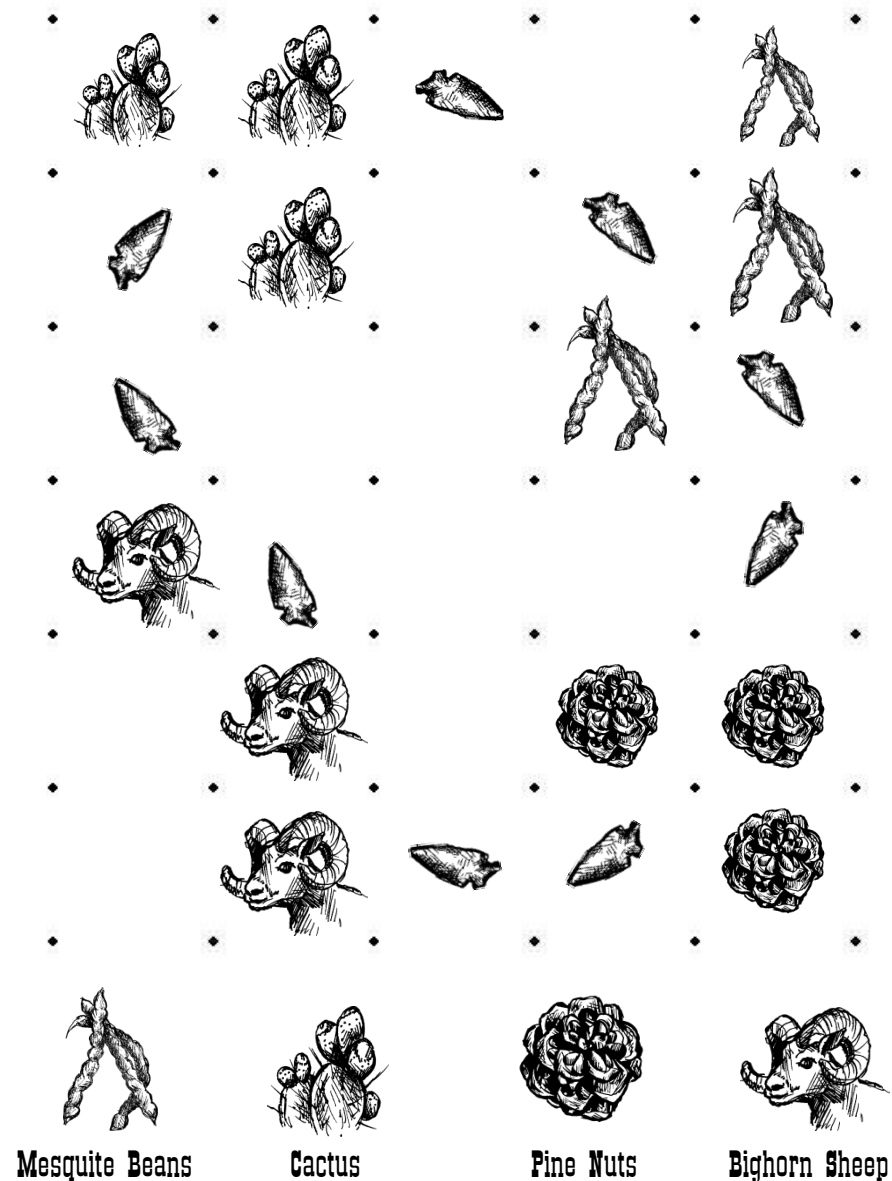


Capture the food! The person with the most wins!

You move by connecting two dots with a line. When you place the last 'wall' of a single square (box), the box is yours. The players move in turn, but whenever a player takes a box they must move again.

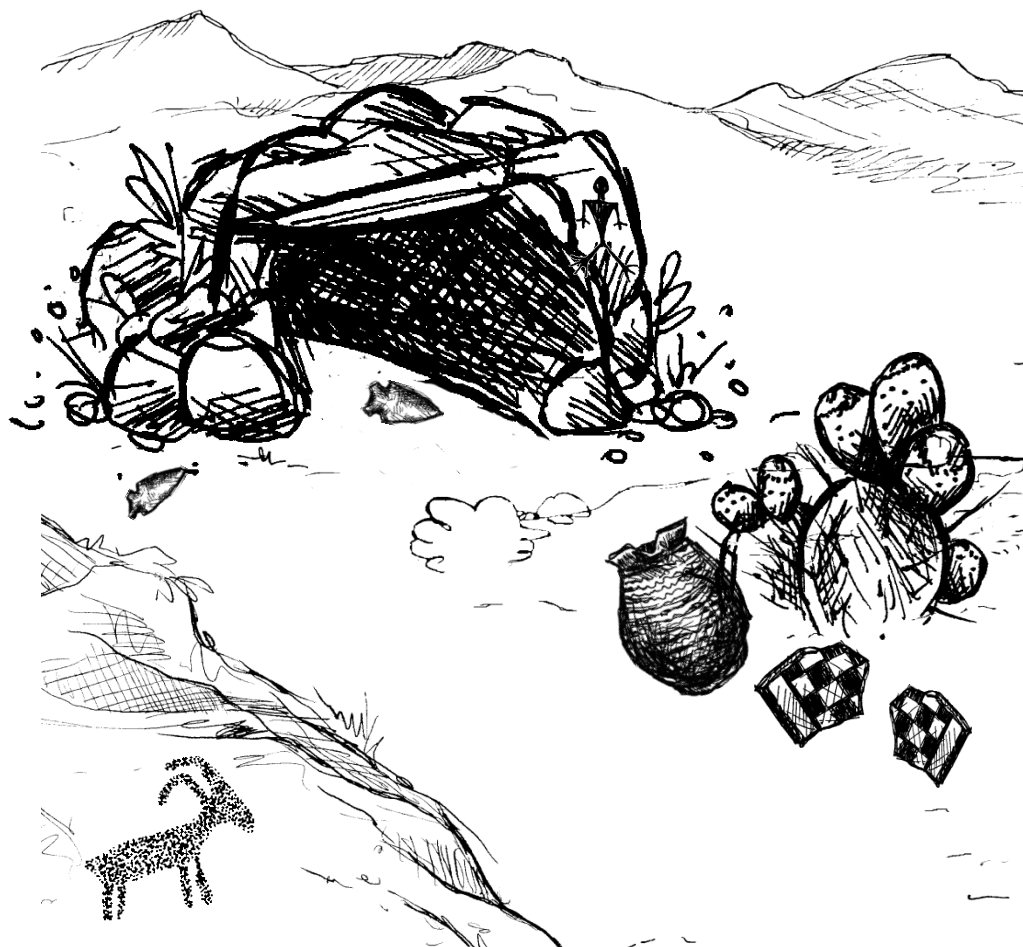
Hunters & Gatherers Thousands of years ago, Native American ancestors lived off the land in Nevada. They moved season to season to hunt animals and gather plants. They left behind evidence of their lives.

Find the Evidence: There are 7 clues in the picture below. These clues help us know that Native American ancestors once lived in the area. Can you find all of them?



Mesquite Beans Cactus Pine Nuts Bighorn Sheep

 Arrows show the path Native Americans used to collect food.



Connect the Dots: Rock writings are scratched (petroglyphs) or painted (pictographs). It is important not to add your own images to the rocks.

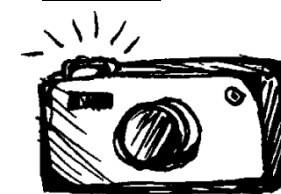
Circle the things you should do. **Cross Out** the things you should not do.



Draw on Paper



Spray Paint Rocks



Take Pictures



Sleep in a Tent



Take Home Arrowheads



REPORT ONLINE AT
WWW.SHPO.NV.GOV/REPORT-DAMAGE OR CALL (702) 486-5011