

PARKING LOT REPAIRS AND MAINTENANCE

FOR

STEWART FACILITY

5500 Snyder Avenue

Carson City, Nevada

A.P.N. 009-241-19

SPWD Project No. 25-S05-2

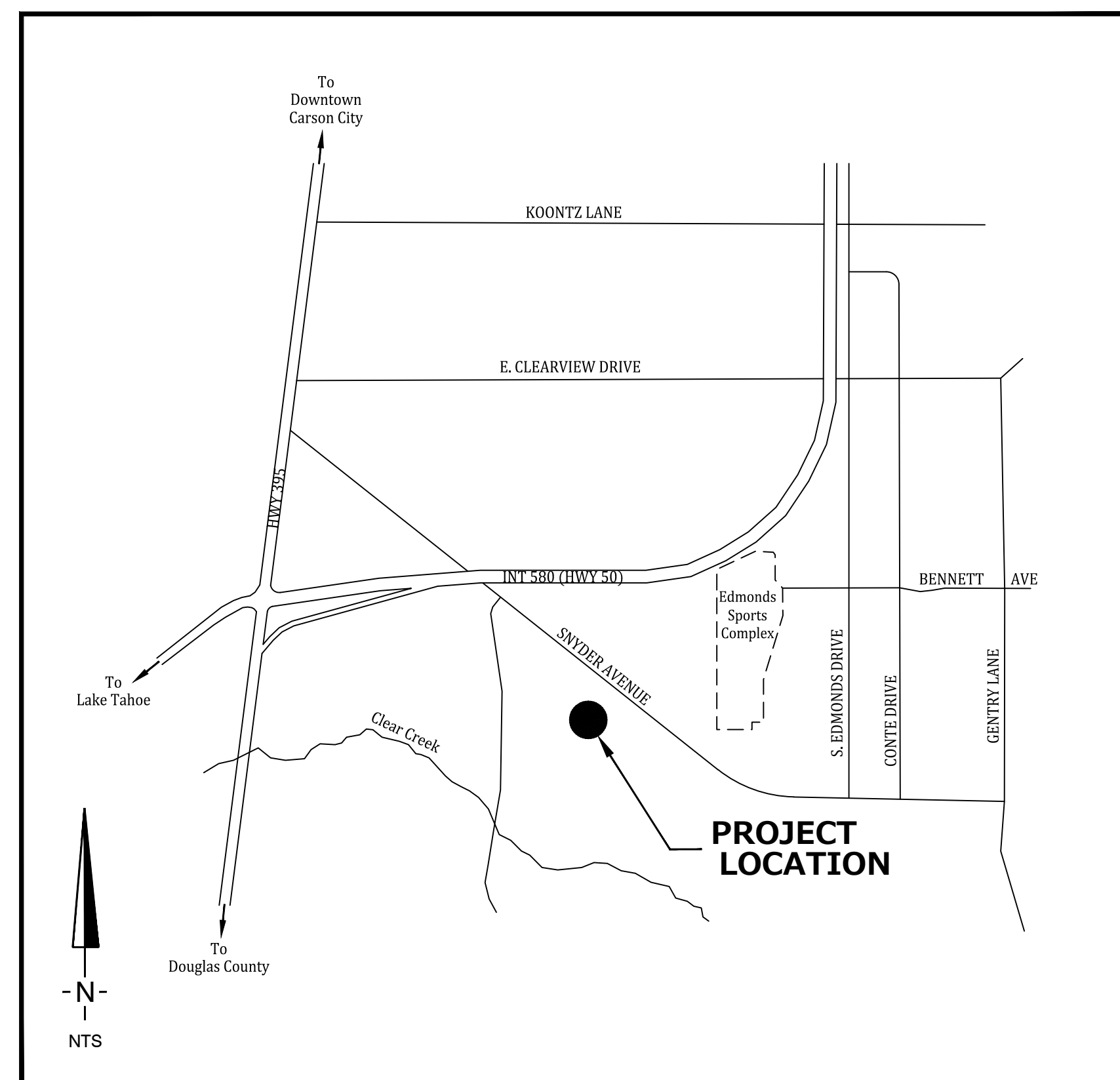
ABBREVIATIONS:

(SOME ABBREVIATIONS LISTED BELOW MAY NOT BE INCLUDED IN THIS PLAN SET)

AC	ASPHALTIC CONCRETE	MIN	MINIMUM
ADA	AMERICANS WITH DISABILITIES ACT	N	NORTH
AFG	ABOVE FINISH GRADE	NNVMC	NORTHERN NEVADA VETERANS MEMORIAL CEMETERY
APPROX.	APPROXIMATE	OHP	OVERHEAD POWER
AP	ANGLE POINT	PCC	PORTLAND CEMENT CONCRETE
BC	BEGINNING OF CURVE	PCC	POINT OF COMPOUND CURVE
BF	BACKFLOW PREVENTOR	PIV	POST INDICATOR VALVE
BFG	BELOW FINISHED GRADE	POL	POINT ON LINE
BLDG	BUILDING	POC	POINT ON CURVE
BOS	BOTTOM OF STEP	PP	POWER POLE
BOW	BACK OF SIDEWALK	PRC	POINT OF REVERSE CURVE
C&G	CURB AND GUTTER	PVC	POLYVINYL CHLORIDE
CL	CENTERLINE	R	RADIUS
COMP	COMPACTION	RPBF	REDUCED PRESSURE BACKFLOW ASSEMBLY
CONC	CONCRETE	SD	STORM DRAIN
CU YD	CUBIC YARD	SDMH	STORM DRAIN MANHOLE
DG	DECOMPOSED GRANITE	SHT	SHEET
DIA	DIAMETER	SPWD	STATE OF NEVADA PUBLIC WORKS DIVISION
DWG	DRAWING	SS	SANITARY SEWER
EC	END OF CURVE	SSMH	SANITARY SEWER MANHOLE
EL	ELECTRIC	TBC	TOP BACK OF CURB
EL	ELEVATION	TC	TOP OF CONCRETE
EP	EDGE OF PAVEMENT	TOC	TOP OF CURB
EX	EXISTING	TOW	TOP OF WALL
FDC	FIRE DEPARTMENT CONNECTION	TS	TOP OF SLOPE
FF	FINISHED FLOOR	TYP.	TYPICAL
F.G.	FINISHED GRADE	W	WATER
FH	FIRE HYDRANT	WV	WATER VALVE
FT	FEET	W/	WITH
G	GAS LINE	UGP	UNDERGROUND POWER
GS	GROUND SHOT	UNO	UNLESS NOTED OTHERWISE
HDPE	HIGH DENSITY POLYETHYLENE	VG	VALLEY GUTTER
HP	HIGH POINT	'	FEET
IE	INVERT ELEVATION	"	INCHES
IRR	IRRIGATION	%	PERCENT
MAX	MAXIMUM		
M.D.D.	MAXIMUM DRY DENSITY		
M.E.	MATCH EXISTING		

LEGEND

— EX 12" W —	EX. WATERLINE
— T —	EX. TELEPHONE
— E —	EX. ELECTRIC
— G —	EX. GAS
— EX SD —	EX. STORM DRAIN
— EX SS —	EX. SANITARY SEWER
SSCO @	EX. SANITARY SEWER CLEANOUT
— V —	EX. WATER VALVE
— H —	EX. FIRE HYDRANT
— / —	SAWCUT LINE
■	AC PAVEMENT PATCH



VICINITY MAP

NOT TO SCALE

SHEET INDEX:

SHEET C1	-	TITLE SHEET
SHEET C2	-	NOTES AND SPECIFICATIONS
SHEET C3	-	SHEET INDEX & EXISTING SITE PLAN
SHEET C4	-	PAVING PLAN - BLDG 89 PARKING LOT
SHEET C5	-	PAVING PLAN - GYMNASIUM PARKING LOT
SHEET C6	-	PAVING PLAN - PUBLIC SAFETY PARKING LOT
SHEET C7	-	PAVING PLAN - P.O.S.T. PARKING LOT
SHEET C8	-	PAVING PLAN - P.O.S.T. CADET PARKING LOT
SHEET C9	-	DETAILS

OWNER:

NEVADA STATE PUBLIC WORKS
CONTACT: MARKUS MCENTEE
515 E. MUSSEY STREET, STE. 102
CARSON CITY, NEVADA 89701
(775) 684-4141

ENGINEER:

RESOURCE CONCEPTS, INC.
CONTACT: JOE CACIOPPO, P.E.
340 NORTH MINNESOTA STREET
CARSON CITY, NEVADA 89703
(775) 883-1600

BASIS OF BEARINGS

THE BASIS OF BEARINGS FOR THIS SURVEY IS BASED ON THE NEVADA COORDINATE SYSTEM OF 1983, WEST ZONE [NAD83/94] [NAD83 2011 (EPOCH 2010.00)] SCALED TO GROUND AROUND 0.00N, 0.00E BY THE COMBINED SCALE FACTOR OF 1.0002 AS MEASURED FROM CARSON CITY CONTROL POINT 1034 AS SHOWN ON THE 2010 CARSON CITY CONTROL NETWORK, FILE NO. 403435, MAP NO. 2749.

BASIS OF ELEVATIONS

THE BASIS OF ELEVATIONS FOR THIS SURVEY IS NAVD 88, AS MEASURED FROM CARSON CITY CONTROL POINT 1034.

ELEVATION=4687.56

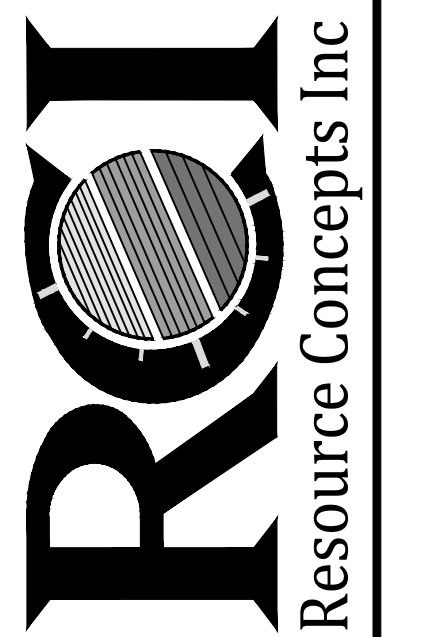
SURVEYOR'S NOTES

1. THE TOPOGRAPHIC INFORMATION SHOWN HEREON IS BASED ON A CONVENTIONAL FIELD SURVEY AND AN AERIAL SURVEY PERFORMED BY ME OR UNDER MY DIRECT SUPERVISION, AS AN AGENT OF RESOURCE CONCEPTS INC., ON NOVEMBER 7, 13, & 26, 2025, AT THE INSTANCE OF STATE OF NEVADA, DEPARTMENT OF PUBLIC WORKS.
2. A BOUNDARY SURVEY WAS NOT PERFORMED FOR THIS TASK.
3. NO TITLE REPORT WAS PROVIDED FOR THIS SURVEY.
4. EASEMENTS MAY EXIST THAT ARE NOT SHOWN HEREON.
5. ANY UTILITY LOCATIONS SHOWN HEREON ARE BASED ON SURFACE OBSERVATIONS MADE AT THE TIME OF THE FIELD SURVEY. A UTILITY LOCATE SERVICE SHOULD BE USED PRIOR TO ANY POTHOLES OR EXCAVATION TO DETERMINE THE LOCATIONS OF ANY EXISTING SUBSURFACE UTILITIES.



Know what's below.
Call before you dig.

Engineering • Surveying • Water Rights
Resources & Environmental Services
www.rci-nv.com
Carson City
340 N. Minnesota St.
Carson City, NV 89703-4152
775-883-1600



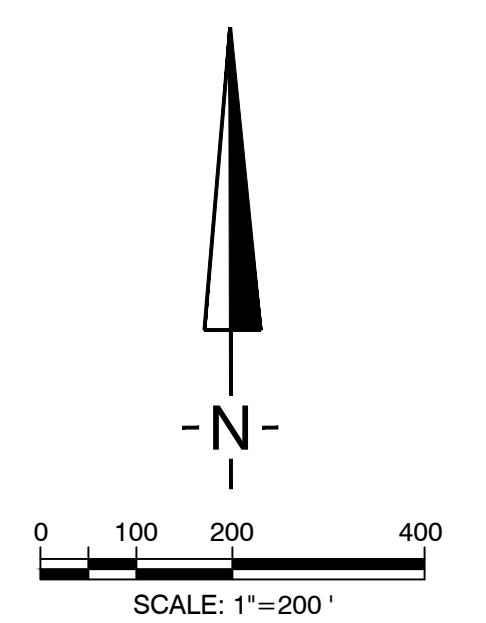
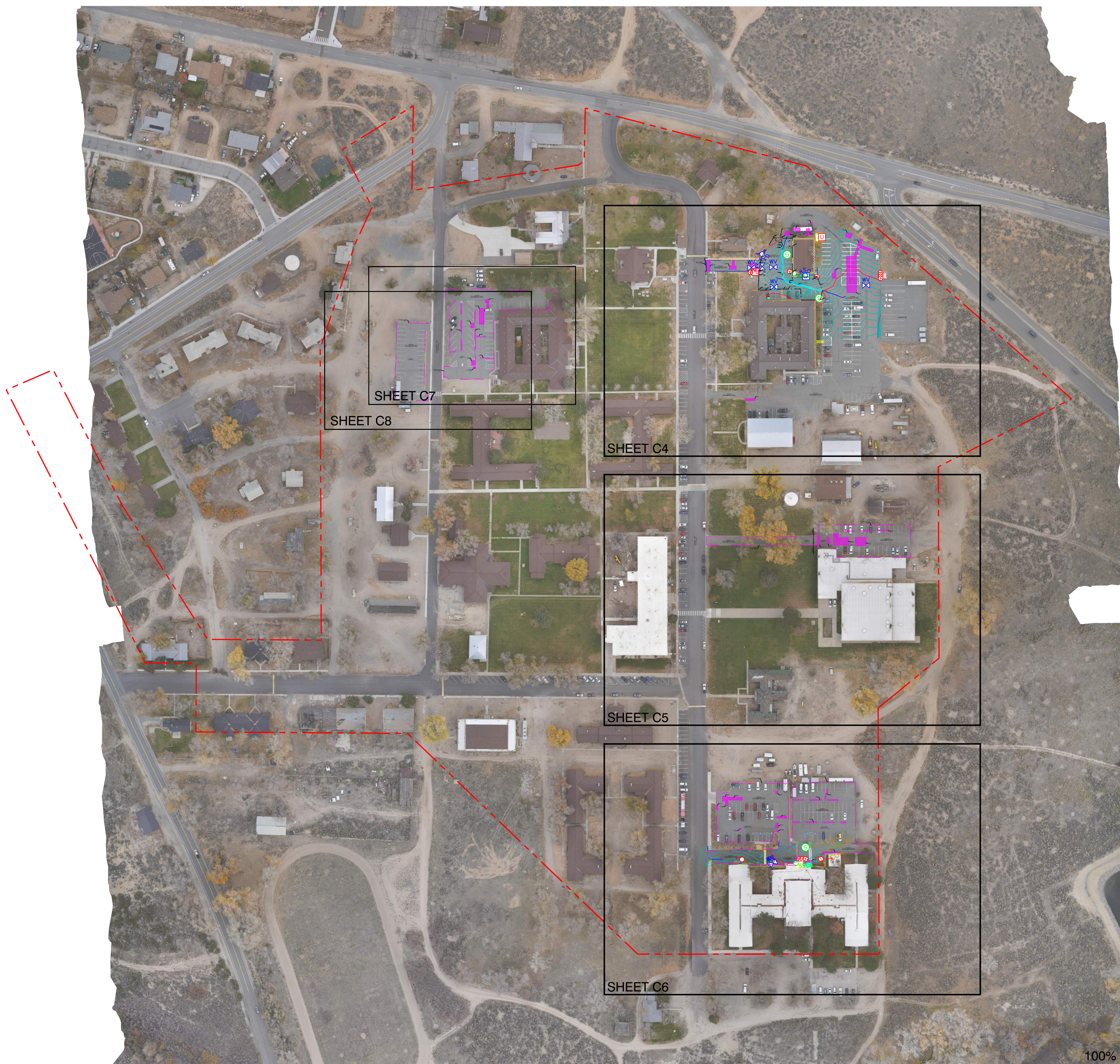
REVISION	DATE

PARKING LOT REPAIRS & MAINTENANCE
STEWART FACILITY
5500 Snyder Avenue, Carson City, NV
SPWD #25-S05-2

TITLE SHEET



JOB NO.:	25-243.1
DATE:	FEB. 18, 2026
DESIGNED:	JEC/NT
DRAWN:	JEC
CHECKED:	JEC

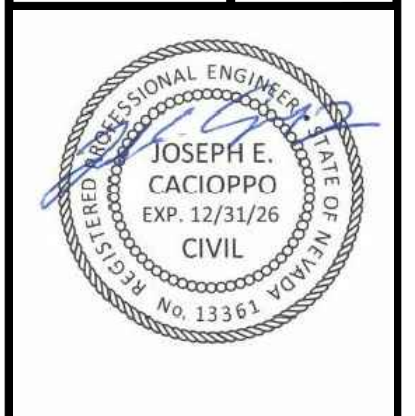


100% CONSTRUCTION DOCUMENTS

REVISION	DATE

PARKING LOT REHABILITATION
SIERRA FRONT DISPATCH
2811 Firebrand Circle, Minden, NV
SPWD 25-S05-5

SHEET INDEX



JOB NO.:	25-241.1
DATE:	FEB. 18, 2026
DESIGNED:	JEC/NT
DRAWN:	JEC
CHECKED:	JEC



Engineering • Surveying • Water Rights
Resources & Environmental Services

www.rci-nv.com
Carson City
340 N. Minnesota St.
Carson City, NV 89703-4152
775-885-1800

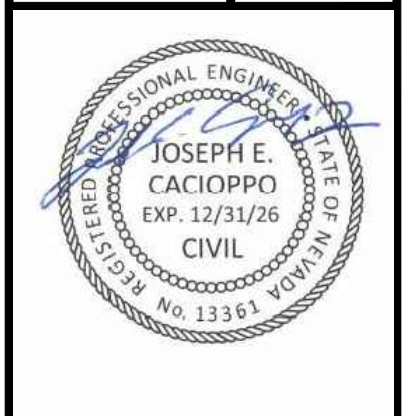
Lake Tahoe
276 Kingsbury Grade, Ste. 206
Stateline, NV 89449
775-588-7500



REVISION	DATE

PARKING LOT REHABILITATION
SIERRA FRONT DISPATCH
2311 Firebrand Circle, Minden, NV
SPWD 25-S05-5

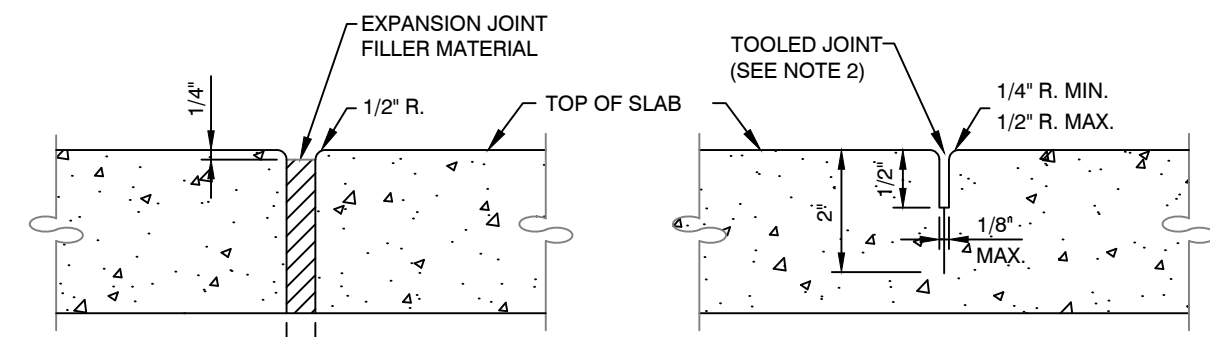
PAVING PLAN
PUBLIC SAFETY PARKING LOT



JOB NO.: 25-241.1
DATE: FEB. 18, 2026
DESIGNED: JEC/NT
DRAWN: JEC
CHECKED: JEC

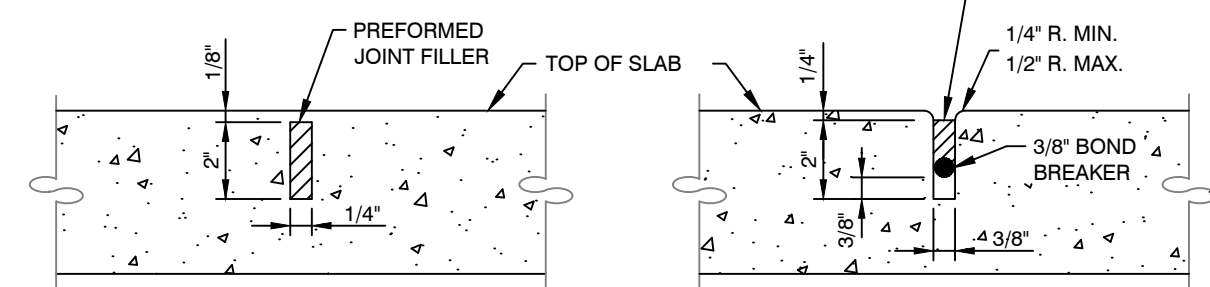


100% CONSTRUCTION DOCUMENTS



EXPANSION/ISOLATION JOINT

WEAKENED PLANE JOINT SIDEWALK, CURB & GUTTER



WEAKENED PLANE JOINT P.C.C. PAVEMENT

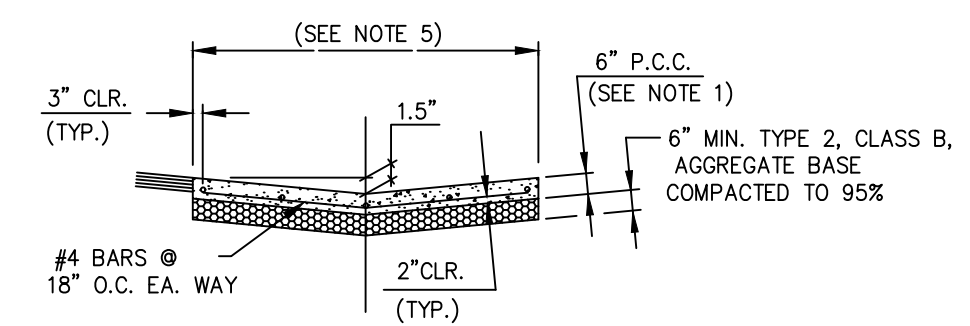
SAWED OR PREFORMED STRIP JOINT

NOTES:

- ALL CONCRETE EDGING AND JOINTING SHALL CONFORM TO SECTION 312 OF THE STANDARD SPECIFICATIONS FOR PUBLIC WORKS CONSTRUCTION (SSPWC).
- AFTER PRELIMINARY TROWELING, THE CONCRETE SHALL BE PARTED TO A DEPTH OF 2 INCHES WITH A STRAIGHTEDGE ON THE FRONT TOP AND BACK. THE CONCRETE SHALL THEN BE REFLOWED TO FILL THE PARTED JOINT WITH MORTAR. FINAL JOINT FINISHING SHALL BE ACCOMPLISHED WITH A JOINTER TOOL AS SHOWN.
- FULL DEPTH EXPANSION JOINTS MUST BE PLACED IN SIDEWALKS AT TANGENT POINTS, GRADE BREAKS $\geq 1\%$, EACH SIDE OF CURB RAMPS AND AT A MAXIMUM OF 30 FOOT INTERVALS. WEAKENED PLANE JOINTS MUST BE PLACED IN SIDEWALK AT A MAXIMUM OF 5 FOOT INTERVALS.
- EXPANSION JOINTS MUST BE PLACED IN CURB/CURB AND GUTTER AT TANGENT POINTS, GRADE BREAKS AND EACH SIDE OF CURB RAMPS.

STANDARD DETAIL FOR PUBLIC WORKS CONSTRUCTION

P.C.C. JOINTING DETAILS



SECTION

NOTES:

- PORTLAND CEMENT CONCRETE (P.C.C.) SHALL HAVE THE FOLLOWING CHARACTERISTICS: SYNTHETIC FIBER-REINFORCEMENT (AT A MINIMUM OF 1 POUND PER CUBIC YARD), 4000 PSI MIN. COMPRESSIVE STRENGTH @ 28 DAYS, MIN. 6 SACKS OF CEMENT PER CUBIC YARD WITH A MAX. WATER/CEMENT RATIO OF 0.45, AIR ENTRAINMENT $6\% \pm 1.5\%$, SLUMP AT 1 TO 4 INCHES. ALL MATERIALS SHALL CONFORM TO SSPWC SECTION 202. POLYPROPYLENE FIBERS SHALL BE ADDED TO THE P.C.C. PER THE MANUFACTURER'S RECOMMENDATIONS.
- AGGREGATE BASE SHALL BE ENGINEERED TYPE 2, CLASS B WITH 95% COMPACTION.
- VALLEY GUTTER SHALL HAVE WEAKENED PLANE JOINTS EVERY 10 FEET.
- ALL CONCRETE EDGING AND JOINTING SHALL BE CONSTRUCTED IN ACCORDANCE WITH SECTION 312.09 OF THE STANDARD SPECIFICATIONS FOR PUBLIC WORKS CONSTRUCTION.

STANDARD DETAIL FOR PUBLIC WORKS CONSTRUCTION

P.C.C. VALLEY GUTTER

MATERIAL QUANTITIES					
PARKING LOT	BUILDING 89	GYMNASIUM	PUBLIC SAFETY	P.O.S.T.	CADET
ITEM	QUANTITY	QUANTITY	QUANTITY	QUANTITY	QUANTITY
REMOVE AC PAVING	12,750 SF	1,188 SF	669 SF	586 SF	-
REMOVE CONCRETE WALK & VG	104 SF	-	-	-	-
EARTHWORK	73 CY	-	-	-	-
NEW 3" AC PAVING ON 6" BASE	9,293 SF	-	-	-	-
NEW 3" AC PAVING PATCH ON 6" BASE	2,982 SF	1,188 SF	669 SF	586 SF	-
T-GRIND & REPAVE	-	208 SF	498 SF	508 SF	-
CLEAN CRACKS AND CRACK FILL	30 CF	8 CF	20 CF	10 CF	4 CF
SLURRY SEAL	72,169 SF	17,810 SF	47,150 SF	24,405 SF	10,650 SF
NEW PCC VALLEY GUTTER	549 SF	-	-	-	-
NEW PCC SIDEWALK	33 SF	-	-	-	-

- Notes:
- Pavement striping is included in cost estimate.
 - T-Grind assumes a 2-foot width.
 - Bldg 89 new paving not intended to be sealed.

- NO CONCRETE SHALL BE PLACED UNTIL FORMS AND SUBGRADE ARE INSPECTED AND APPROVED BY SPWD.
- PORTLAND CEMENT CONCRETE (P.C.C.) MUST HAVE THE FOLLOWING CHARACTERISTICS: SYNTHETIC FIBER REINFORCEMENT (AT A MINIMUM OF 1 POUND PER CUBIC YARD), 4000 PSI MIN COMPRESSIVE STRENGTH @ 28 DAYS, MIN 6 SACKS OF CEMENT PER CUBIC YARDS WITH A MAX. WATER/CEMENT RATIO OF 0.45, AIR ENTRAINMENT $6\% \pm 1.5\%$, SLUMP AT 1 TO 4 INCHES ALL MATERIALS MUST CONFORM TO SSPWC SECTION 202. OF THE STANDARD SPECIFICATIONS FOR PUBLIC WORKS CONSTRUCTION.
- CONCRETE EDGING AND JOINTING MUST BE CONSTRUCTED IN ACCORDANCE WITH STANDARD DETAIL C-5.1.1 AND CONFORM TO SECTION 312 OF THE STANDARD SPECIFICATIONS FOR PUBLIC WORKS CONSTRUCTION (SSPWC).
- IF OBSTRUCTIONS SUCH AS INLETS, UTILITY POLES, FIRE HYDRANTS, ETC. ARE ENCOUNTERED, THE LOCATION AND DIMENSIONS MAY BE ADJUSTED UPON APPROVAL BY SPWD. A MINIMUM SURFACE OF 4 FEET X 4 FEET CLEAR IS REQUIRED WHEN DIRECTION OF TRAVEL MAY CHANGE AND A MINIMUM SURFACE OF 4 FEET CLEAR IS REQUIRED WHERE DIRECTION OF TRAVEL IS NOT EXPECTED TO CHANGE, UNLESS OTHERWISE APPROVED BY SPWD.
- CONCRETE MUST BE REMOVED TO A NEAT SAWCUT LINE AT THE NEAREST CONTROL JOINT.
- AGGREGATE BASE MUST BE TYPE 2, CLASS B AND SHALL CONFORM TO SEC 200.01. OF THE STANDARD SPECIFICATIONS FOR PUBLIC WORKS CONSTRUCTION (SSPWC).
- NEW CONCRETE MUST HAVE A HEAVY BROOM FINISH PERPENDICULAR TO SIDEWALK.
- AC PAVEMENT EDGE MUST BE FLUSH TO 1/4 INCH ABOVE THE LIP OF GUTTER.
- NEW CONCRETE MUST BE TREATED WITH POLYURE, 25% SOLIDS SOLVENT BASED CURE & SEAL (OR APPROVED EQUAL) PROVIDED AND APPLIED PER MANUFACTURER'S RECOMMENDATIONS FOR USE AS A WATER RETENTION CURING COMPOUND. THE CURING COMPOUND MUST BE A SOLVENT BASED, COLORLESS, NON-YELLOWING COMPOUND, MEETING ASTM C 309, TYPE 1, CLASS B.
- NEW CONCRETE MUST BE TREATED WITH BARACADE SILANE 100 C PENETRATING TREATMENT (OR APPROVED EQUAL) PROVIDED AND APPLIED PER MANUFACTURER'S RECOMMENDATIONS FOR USE AS A SALT INHIBITOR. TIMING OF THE TREATMENT MUST BE CONSISTENT WITH RECOMMENDATIONS FOR BOTH THE WATER CURING COMPOUND AND THE MANUFACTURER OF THE PENETRATING TREATMENT. CONTRACTOR TO CONTACT CITY'S INSPECTOR 24 HOURS PRIOR TO FIRST APPLICATION. INSPECTOR MUST BE PRESENT DURING FIRST APPLICATION TO VERIFY APPLICATION RATE AND COVERAGE IS ACCEPTABLE.
- SIDEWALK PATCHES MUST BE THE FULL WIDTH OF THE SIDEWALK TO THE NEAREST EXISTING CONTROL JOINT.
- EXISTING UTILITY BOXES AND VALVE COVERS LOCATED IN NEWLY CONSTRUCTED OR RE-CONSTRUCTED SIDEWALK AND DRIVEWAYS ARE TO BE REPLACED AND INSTALLED PER THE SPWD. TRAFFIC SIGNAL AND FIBER OPTIC PULL BOXES THAT CANNOT MEET THE REQUIREMENTS OF DETAIL C-5.6.1 SHALL BE RELOCATED OUTSIDE OF DRIVEWAY. IN ALL CASES THE DRIVEWAY MUST BE CONSTRUCTED SO THAT PULL BOXES ARE OFFSET FROM THE FLOWLINE A MINIMUM OF 2'

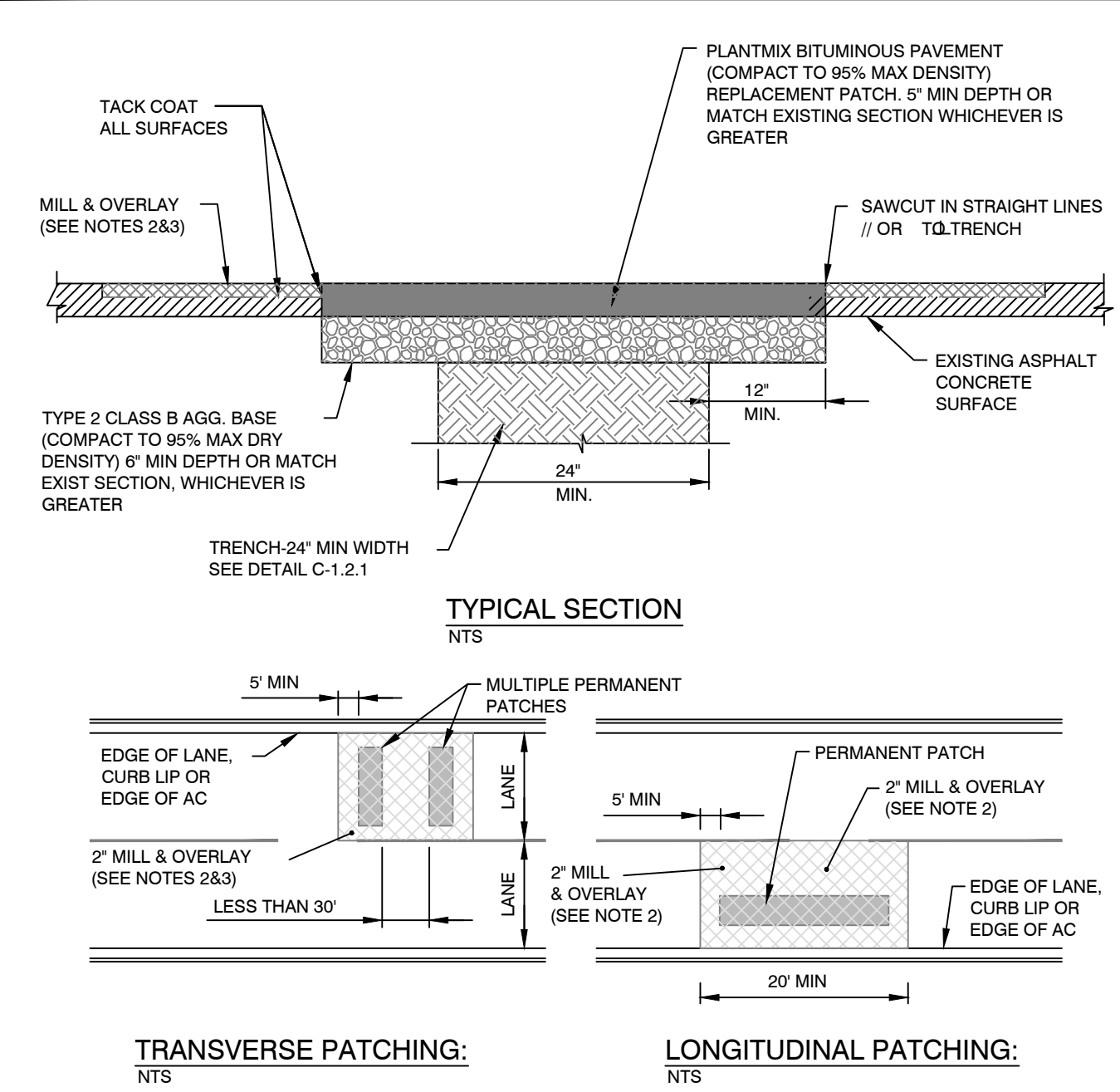
STANDARD DETAIL FOR PUBLIC WORKS CONSTRUCTION

SIDEWALK AND DRIVEWAY GENERAL NOTES

- IF SAWCUT IS WITHIN 24 INCHES OF EDGE OF A C. PAVEMENT, AN EXISTING SAWCUT EDGE OR PAVEMENT PATCH, REMOVE EXISTING PAVEMENT TO THAT EDGE AND REPLACE ENTIRE SECTION.
- BITUMINOUS MATERIAL SHALL MEET THE REQUIREMENTS OF SECTIONS 201 AND 320 OF THE STANDARD SPECIFICATIONS FOR PUBLIC WORKS CONSTRUCTION.
- MIXING, SPREADING, AND COMPACTING OF BITUMINOUS PAVEMENT SHALL BE DONE ONLY WHEN THE SURFACE ON WHICH THE MATERIALS ARE TO BE PLACED IS DRY AND WHEN THE ATMOSPHERIC TEMPERATURE IS ABOVE 50 DEGREES FAHRENHEIT AND HAS NOT BEEN BELOW 40 DEGREES FAHRENHEIT DURING THE PRECEDING 24 HOURS.
- FINISHED SURFACE VARIATIONS SHALL BE 0 TO 0.25 INCHES ABOVE EXISTING SURFACE. ALL HUMPS EXCEEDING THIS TOLERANCE SHALL BE CORRECTED BY REMOVAL OF MATERIAL AND REPLACING IT WITH NEW MATERIAL. FINISHED SURFACE OF PATCH SHALL NOT BE BELOW EXISTING ADJACENT SURFACE.
- TRENCH PLANTMIX BITUMINOUS PAVEMENT SURFACE AND SUB SURFACE COURSES SHALL BE PG64-22 TYPE 3 WITH LIME 50 BLOW AND 15% RAP MAX. UNLESS OTHERWISE NOTED. MILL AND FILL PLANTMIX BITUMINOUS PAVEMENT SURFACE AND SUB SURFACE COURSES SHALL BE PG64-28NV TYPE 3 WITH LIME 50 BLOW AND 15% RAP MAX. UNLESS OTHERWISE NOTED.
- PLANTMIX BITUMINOUS PAVEMENT PATCHES SHALL MATCH EXISTING SECTION OR HAVE A MINIMUM THICKNESS OF 5 INCHES, WHICHEVER IS GREATER.
- PLANS SHALL SPECIFY PAVEMENT PATCH AND AGGREGATE BASE DEPTHS AS SPECIFIED BY THE DESIGN ENGINEER.
- CONTRACTOR SHALL BE RESPONSIBLE FOR REPLACEMENT OF LOOP DETECTORS, ADJUSTMENT OF UTILITIES AND SURVEY MONUMENTS TO GRADE AND INSTALLATION OF PERMANENT PAVEMENT MARKINGS.
- LONGITUDINAL PATCHES ALONG PCC CURBS AND GUTTERS SHALL BE A MINIMUM OF 24 INCHES IN WIDTH.

STANDARD DETAIL FOR PUBLIC WORKS CONSTRUCTION

PAVEMENT PATCH GENERAL NOTES



TRANSVERSE PATCHING: NTS

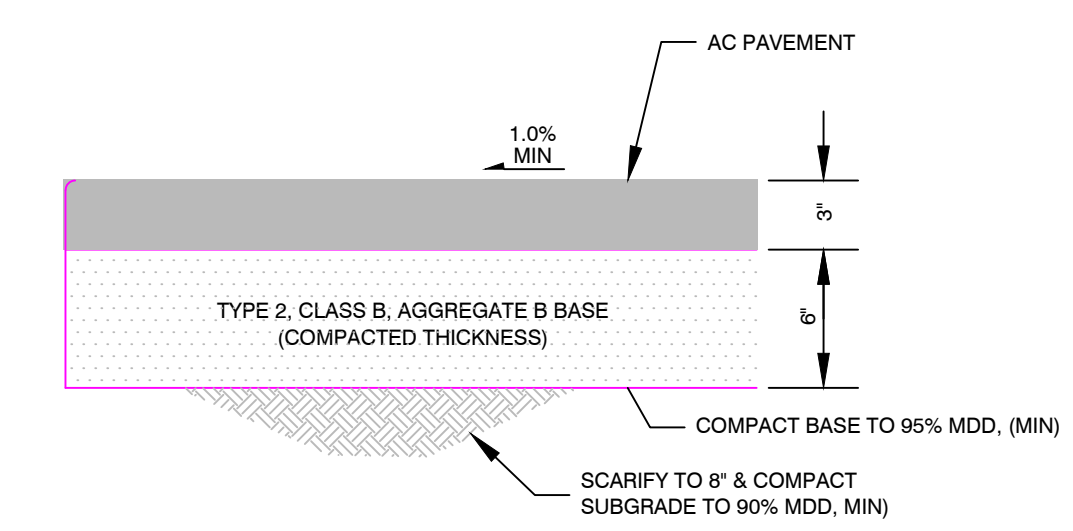
LONGITUDINAL PATCHING: NTS

NOTES:

- SEE DETAIL C-5.1.6 FOR PAVEMENT PATCH GENERAL NOTES
- MILL AND OVERLAY FOR STREETS WITH PAVEMENT CONDITION INDEX (PCI) GREATER THAN 71 ONLY:
 - TRANSVERSE PATCHES SHALL INCLUDE A 2" MILL AND OVERLAY WHEREVER THERE ARE MULTIPLE PATCHES WITHIN 30 FEET OF EACH OTHER.
 - LONGITUDINAL PATCHES SHALL INCLUDE 2" MILL AND OVERLAY TO THE EDGE OF AC OR LANE LINES (BIKE, PARKING, OR TRAVEL).
- MILL AND OVERLAY AREAS OF EXISTING AC PAVEMENT WITH SECTIONS OF LESS THAN 4 INCHES SHALL BE REMOVED AND RECONSTRUCTED.

STANDARD DETAIL FOR PUBLIC WORKS CONSTRUCTION

PAVEMENT PATCH



- NOTES
- BASE SHALL COMPLY WITH ORANGE BOOK STANDARDS.

TYPICAL AC PAVEMENT SECTION
NO SCALE

Engineering • Surveying • Water Rights
Resources & Environmental Services

www.rci-nv.com

Carson City
340 N. Minnesota St.
Carson City, NV 89703-4152
775-883-1800

Lake Tahoe
278 Kingsbury Grade, Ste. 206
Stateline, NV 89449
775-588-7500

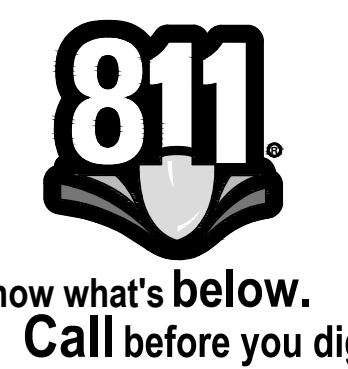
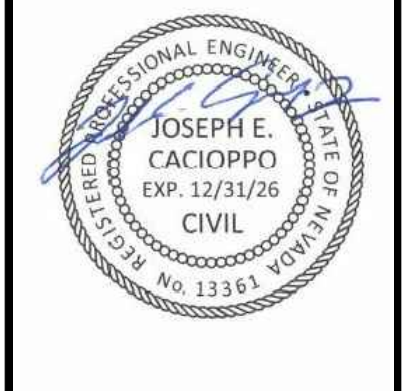
RCI

Resource Concepts Inc

REVISION	DATE

PARKING LOT REPAIRS & MAINTENANCE
STEWART FACILITY
5500 Snyder Avenue, Carson City, NV
SPWD #25-S05-2

DETAILS



JOB NO.:	25-243.1
DATE:	FEB. 18, 2026
DESIGNED:	JEC/NT
DRAWN:	JEC
CHECKED:	JEC