

HVAC SYSTEM RENOVATION BUILDING #107

5500 SNYDER AVE #107
CARSON CITY, NEVADA 89701
SPWD PROJECT No. 25-MO3-07

STATE OF NEVADA PUBLIC WORKS DIVISION
680 W. NYE LANE, SUITE 103
CARSON CITY, NEVADA 89703
FCA SITE #9971
SPWD BLDG # 0989

OWNER

COURTNEY LEITNER PE
STATE OF NEVADA PUBLIC WORKS
7115 AMIGO STREET, SUITE 100
LAS VEGAS, NV 89119
(702) 305-0921
CLEITNER@ADMIN.NV.GOV

MECHANICAL

BRYAN TILTON PE
ETCHEMENDY ENGINEERING INC.
10597 DOUBLE R BOULEVARD
RENO, NV 89521
(775) 853-1131
BRYAN@EEI-NV.COM

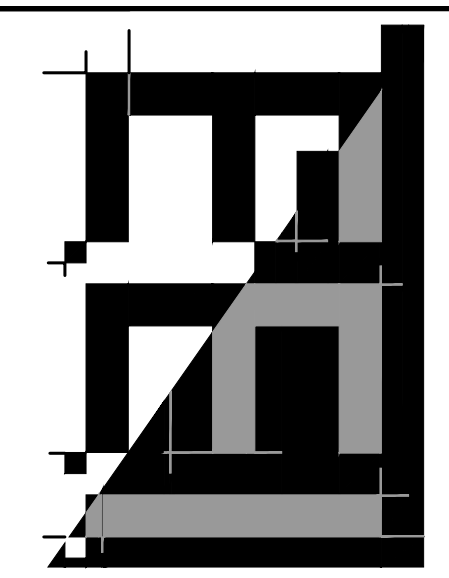
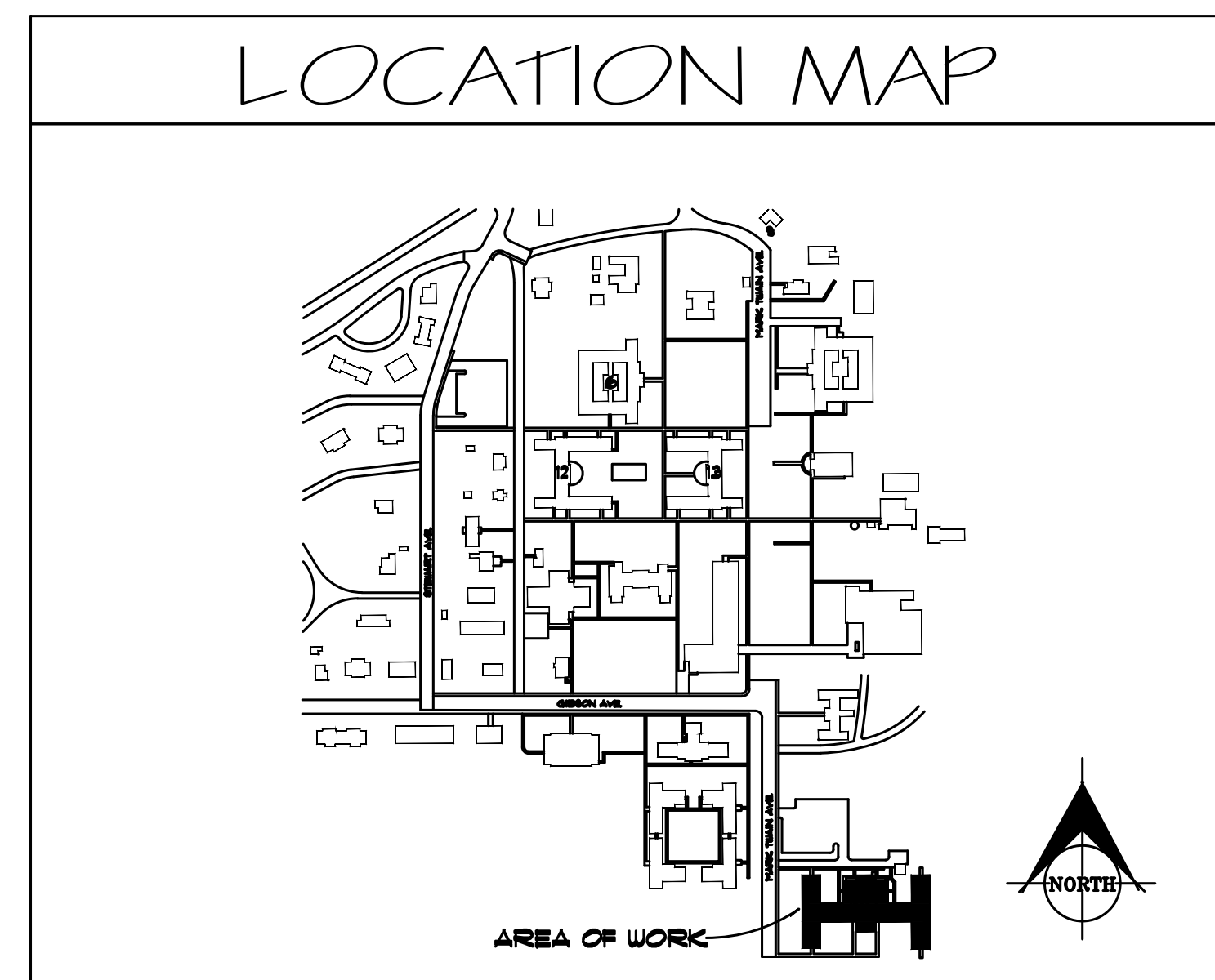
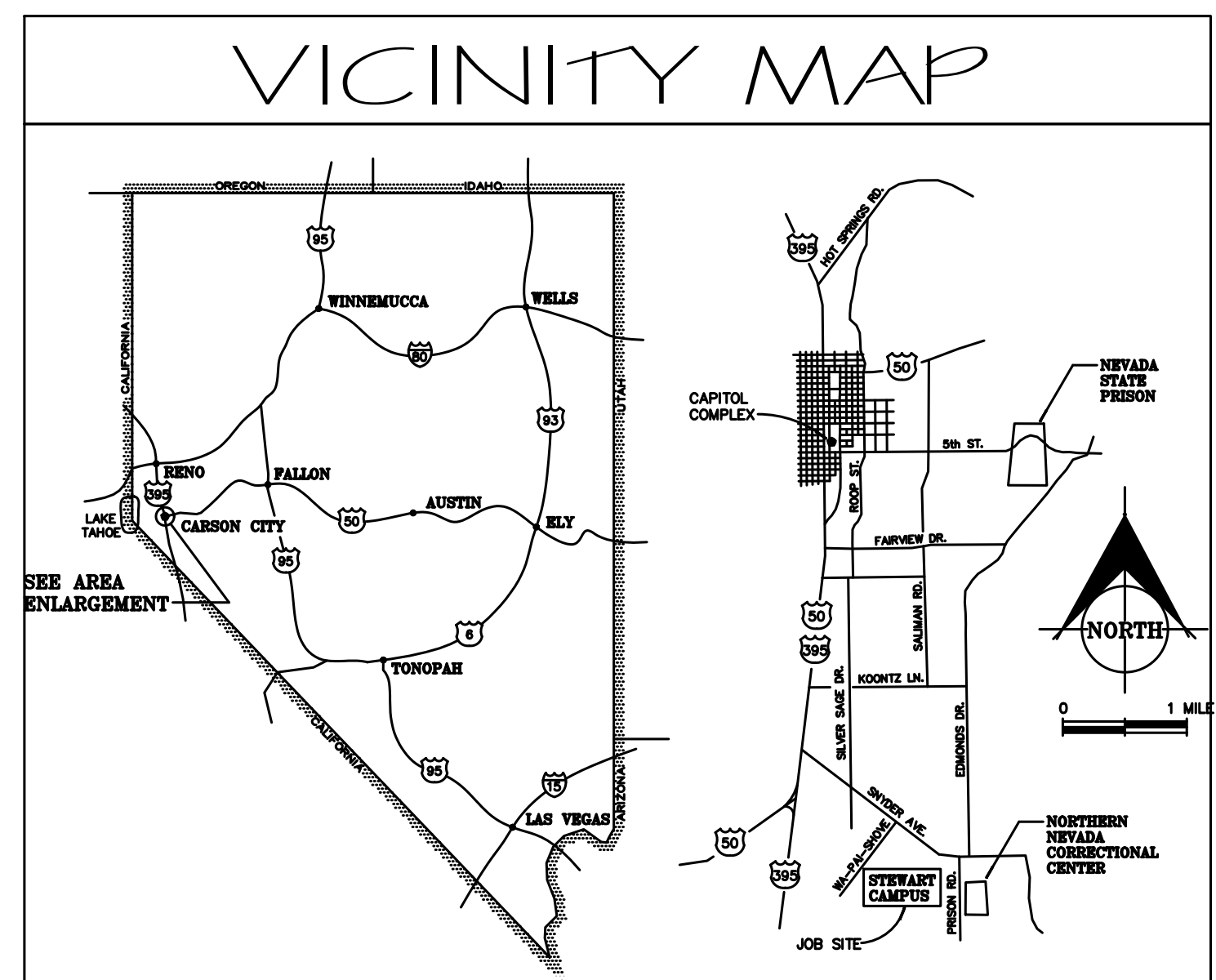
ELECTRICAL

JAMES SOLARO, PE
JP ENGINEERING
10597 DOUBLE R BLVE
RENO, NV 89521
(775) 852-2337
JAMES@JPENGNV.COM

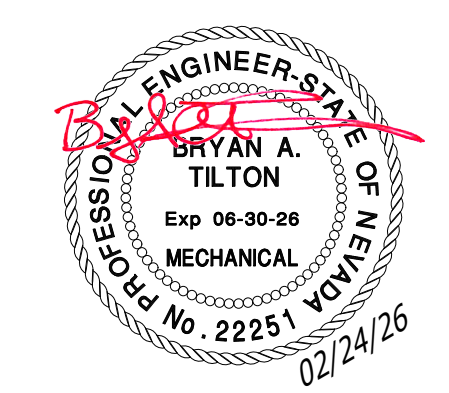
DRAWING INDEX	
TOJ	TITLE PAGE
M01	MECHANICAL SCHEDULES & NOTES
M1J	MECHANICAL PLANS
M2J	BOILER PIPING DIAGRAMS
M3.1	CONTROL DIAGRAMS
M3.2	CONTROL DIAGRAMS
M4J	MECHANICAL DETAILS
E01	ELECTRICAL SYMBOL LIST AND SPECIFICATIONS
E02	ELECTRICAL SCHEDULES
E2J	ENLARGED ELECTRICAL PLAN

APPLICABLE CODES:

- INTERNATIONAL BUILDING CODE 2024
- INTERNATIONAL FIRE CODE 2024
- NATIONAL ELECTRICAL CODE 2023
- UNIFORM MECHANICAL CODE 2024
- UNIFORM PLUMBING CODE 2024
- INTERNATIONAL ENERGY CONSERVATION CODE 2024
- INTERNATIONAL EXISTING BUILDING CODE 2024
- NATIONAL FIRE PROTECTION ASSOCIATION (NFPA)



ETCHEMENDY ENGINEERING INC.
10597 DOUBLE R BLVD
RENO, NV 89521
F: 775-853-1131 P: 775-852-2337
BRYAN@EEI-NV.COM



STEWART BUILDING 107
BOILER PLANT RENOVATION
SPWD 25-MO3-07
5500 SNYDER AVE #107
CARSON CITY, NEVADA 89701

REVISIONS

--

DRAWING TITLE
TITLE SHEET

date: 02/24/26
job number: 25081
drawn: BAT
checked: BAT

11.0

MECHANICAL LEGEND

SYMBOL	ABBREVIATION	INTENT
		RIGID DUCT
		INTERNALLY LINED DUCTWORK
		RIGID EXHAUST DUCT
		DUCT DOWN
		DUCT UP
		TURNING VANES
	D	SUPPLY AIR
	G	RETURN AIR
	EXH	EXHAUST AIR
	D	SUPPLY AIR
	G	RETURN AIR
	MVD	MANUAL VOLUME DAMPER
	AD	AUTOMATIC DAMPER (MOTORIZED)
	FLEX	FLEXIBLE DUCTWORK
		VERTICAL BRANCH WITH DAMPER
	DOWN	PIPE DOWN
	UP	PIPE UP
	Ø	DIAMETER ROUND
	(N)	NEW
	(E)	EXISTING
	⊙	POINT OF CONNECTION
	⊖	POINT OF DISCONNECT
	AFF	ABOVE FINISHED FLOOR
	BFF	BELOW FINISHED FLOOR
	AFG	ABOVE FINISHED GRADE
	TYP	TYPICAL
	MIN	MINIMUM
	CFM	CUBIC FEET PER MINUTE
	OSA	OUTSIDE AIR
	ESP	EXTERNAL STATIC PRESSURE
	BTU, BTUH	BRITISH THERMAL UNIT PER HOUR
	MBH	THOUSAND BTU
	CLG	COOLING
	HTG	HEATING
	CAP	CAPACITY
	SENS	SENSIBLE
	LTNT	LATENT
	CHS	CHILLED WATER SUPPLY
	CHR	CHILLED WATER RETURN
	HWS	HEATING HOT WATER SUPPLY
	HWR	HEATING HOT WATER RETURN
	C	CONDENSATE DRAIN
	DW	DOMESTIC WATER
		BALL VALVE
		BALANCING VALVE
		BUTTERFLY VALVE
		AUTOMATIC CONTROL VALVE (2-WAY)
		AUTOMATIC CONTROL VALVE (3-WAY)
		MOTORIZED VALVE 2-WAY VALVE
		MOTORIZED VALVE 3-WAY VALVE
		PRESSURE REDUCING VALVE
		STRAINER
		TRIPLE DUTY VALVE
		CHECK VALVE
		PRESSURE REDUCING VALVE
		SOLENOID VALVE
		DRAIN VALVE
		PRESSURE & TEMPERATURE COMBINATION GAUGE
		SENSOR WELL
		PETE'S PLUG
		UNION

GENERAL NOTES:

STANDARDS AND CODES: LATEST EDITION OF THE UNIFORM MECHANICAL CODE (UMC), AS WELL AS ALL APPLICABLE STATE AND LOCAL CODES AND ORDINANCES. THIS DOES NOT RELIEVE THE CONTRACTOR FROM FURNISHING AND INSTALLING WORK SHOWN OR SPECIFIED WHICH MAY EXCEED THE REQUIREMENTS OF SUCH ORDINANCES, LAWS, REGULATIONS AND CODES.

COMPLETE INSTALLATION: PROVIDE ALL LABOR, MATERIALS, EQUIPMENT, TOOLS, ACCESSORIES, ETC., NECESSARY TO ACCOMPLISH A COMPLETE MECHANICAL SYSTEM IN ACCORDANCE WITH THE PLANS TOGETHER WITH THE SPECIFICATIONS.

PERMITS: OBTAIN AND PAY FOR ALL BUILDING AND WORKING PERMITS AND INSPECTION FEES REQUIRED FOR THIS PROJECT.

DRAWINGS: DATA PRESENTED ON THESE DRAWINGS SHALL BE FIELD VERIFIED SINCE ALL DIMENSIONS, LOCATIONS, AND LEVELS ARE GOVERNED BY ACTUAL FIELD CONDITIONS. REVIEW ELECTRICAL DRAWINGS AND ADJUST ALL WORK TO MEET THE REQUIREMENTS ON CONDITIONS SHOWN THEREON. DO NOT SCALE MECHANICAL PLANS FOR EQUIPMENT, DUCTING, PIPING, APPLIANCE ETC. LOCATIONS. USE CONFIGURED DIMENSIONS IF GIVEN OR CHECK ARCHITECTURAL DRAWINGS.

COPYRIGHT: THESE PLANS, SPECIFICATIONS AND ALL RELATED ADDENDA AND DOCUMENTS CONSTITUTE COPYRIGHT MATERIALS OF ETCEHENYDI ENGINEERING INC. ALL RIGHTS CONFERRED BY THE COPYRIGHT AND SIMILAR LAWS ARE RESERVED TO ETCEHENYDI ENGINEERING INC. THESE MATERIALS SHALL REMAIN THE SOLE PROPERTY OF ETCEHENYDI ENGINEERING INC. AND MAY NOT BE REPRODUCED, DISTRIBUTED TO OTHERS OR USED FOR ANY PURPOSE WHATSOEVER WITHOUT THE PRIOR WRITTEN CONSENT OF ETCEHENYDI ENGINEERING INC.

LOCATIONS: INDICATED LOCATIONS OF ALL EQUIPMENT, DUCTING, PIPING, ETC. ARE SUBJECT TO CHANGE. SHIFT/RELOCATE/RECONFIGURE ANY OR CONNECTION POINT UP TO 10' AS DIRECTED BY ENGINEER, AT NO ADDED COST.

RECORD DRAWINGS: CONTRACTOR SHALL PROVIDE, PRIOR TO FINAL ACCEPTANCE AND OBSERVATION, ONE SET OF REVISED RECORD MECHANICAL CONSTRUCTION DOCUMENTS ON REPRODUCIBLE MEDIUM, INDICATING THE FOLLOWING ADDITIONAL INFORMATION:

RECORD NOTATIONS SHALL BE CLEARLY DRAWN AT A DRAFTING APPEARANCE EQUAL TO THE ORIGINAL DRAWINGS. CONTRACTOR SHALL ALSO PROVIDE ALL OPERATING AND MAINTENANCE MANUALS PRIOR TO FINAL PAYMENT.

EXAMINATION OF SITE AND EXISTING CONDITIONS: BEFORE SUBMITTING A PROPOSAL, CONTRACTOR SHALL EXAMINE THE SITE AND FAMILIARIZE HIMSELF WITH THE EXISTING CONDITIONS AND LIMITATIONS. NO EXTRAS WILL BE ALLOWED BECAUSE OF THE CONTRACTOR'S MISUNDERSTANDING OF THE AMOUNT OF WORK INVOLVED OR HIS LACK OF KNOWLEDGE OF ANY SITE CONDITIONS WHICH MAY AFFECT HIS WORK. ANY APPARENT VARIANCE OF THE DRAWINGS OR SPECIFICATIONS FROM THE EXISTING CONDITIONS AT THE SITE SHALL BE CALLED TO THE ATTENTION OF THE ENGINEER BEFORE SUBMITTING A PROPOSAL.

EQUIPMENT: ALL HVAC AND REFRIGERATION EQUIPMENT SHALL NOT CONTAIN CFC OR HALONS.

SEISMIC RESTRAINT: ALL BUILDING HVAC SYSTEMS, INCLUDING DUCTWORK, IS TO BE SEISMICALLY RESTRAINED PER THE UNIFORM MECHANICAL CODES, INTERNATIONAL BUILDING CODE, AMERICAN SOCIETY OF CIVIL ENGINEERS AND STRUCTURAL ENGINEERING INSTITUTE. RESTRAINT SYSTEMS ARE TO BE COMPLETED IN A "DESIGN BUILD" FASHION BY THE AWARDED CONTRACTOR AND ARE TO BE INCLUDED IN THE PROJECT BID. THE CONTRACTOR IS TO ENLIST A QUALIFIED LICENSED PROFESSIONAL TO PROVIDE COMPREHENSIVE DESIGN CALCULATIONS AND SHOP DRAWINGS FOR SAID SYSTEMS. ALL DESIGN DATA AND DETAILED DRAWINGS ARE TO BE PROVIDED AS A DEFERRED SUBMITTAL TO THE ENGINEER AND SPWD FOR REVIEW AND APPROVAL DURING THE SUBMITTAL PROCESS.

CONSTRUCTION PHASING: CONTRACTOR IS TO COORDINATE WITH SPWD AND END USER OF THE FACILITY ANY ANTICIPATED SHUTDOWNS. CONTRACTOR IS TO PROVIDE A PROJECT SCHEDULE SHOWING NEEDED SHUTDOWNS NO LESS THAN 3 WEEKS PRIOR TO THE PROPOSED SHUTDOWN. FACILITY OPERATIONS ARE TO NOT BE IMPACTED UNLESS AGREED UPON. DOMESTIC HOT WATER SYSTEM IS TO REMAIN OPERATIONAL AT ALL TIMES.

HYDRONIC PRE-READ PRIOR TO CONSTRUCTION. CONTRACTOR IS TO HAVE TAB CONTRACTOR CONDUCT A PRE-READ OF THE EXISTING SECONDARY PUMPING SYSTEM, AS THESE PUMPS ARE DIRECT REPLACEMENTS THE SYSTEM IS TO OPERATE UNDER THE SAME PRESSURE AND FLOW RATE CONDITIONS OF EXISTING CONDITIONS. VALUES ARE TO BE RECORDED AND PROVIDED TO SPWD AND EEI WHEN COMPLETED.

PIPE MATERIAL SCHEDULE

PIPE INSIDE OF BUILDING ABOVE GRADE

PIPING TYPE	MATERIAL
SANITARY WASTE & VENT	CAST IRON NO-HUB
INDIRECT DRAIN PIPING	TYPE L COPPER
DOMESTIC COLD	TYPE L COPPER
BUILDING HEATING (HWS/HWR)	TYPE L COPPER
CONDENSATE	SCHEDULE 40 SOLID WALL PVC DWV
GAS PIPING	SCHEDULE 40 STEEL

** ALL PIPE, FITTINGS, FIXTURES, ETC THAT CONTACT POTABLE WATER FOR HUMAN CONSUMPTION SHALL SHOW NSF # APPROVAL AND SHALL CONFORM TO UNIFORM PLUMBING CODE SECTION 404.1 AND HEALTH AND SAFETY CODE SECTION 16675.

DIFFUSER/GRILLE SYMBOL LEGEND

TAG, SEE EQUIP. SCHEDULE-TYP

AIRFLOW QUANTITY-TYP

NUMBER -TYP

DISTRIBUTION PATTERN-TYP

EQUIPMENT SYMBOL LEGEND

TAG, SEE EQUIP. SCHEDULE-TYP

NOTE-TYP

(R) - RELOCATE

(E) - EXISTING

(X) - DEMOLISH

COMPLETE

NOTE -TYP

PUMP SCHEDULE

SYMBOL	DESCRIPTION	MODEL	HP	FRAME	IMP	FLOW RATE	RPM	HEAD (FT H ₂ O)	NPSH	EFFICIENCY	WEIGHT	ELECTRICAL	ACCESSORIES
	IN-LINE CIRCULATION PUMP	TACO MODEL SKY200D 2x2 - CONNECTION	5	184UM	8.8	40	1760	45	3	42%	325	208V, 3Ø	PREMIUM EFFICIENT MOTOR, VARIABLE FREQUENCY DRIVE SHIPPED UNPROGRAMMED LOOSE MECHANICAL CONTRACTOR TO INSTALL ON WALL (BRED BY ELECTRICAL), NON-OVERLOADING IMPELLER, MECHANICAL SEAL AND WEAR RING, FUSED DISCONNECT
	IN-LINE CIRCULATION PUMP	GRUNDOS MAGNA 3 MODEL 40-80	1/2	-	-	18	-	15	-	-	50	120V, 1Ø 2.5 AMPS	PREMIUM EFFICIENT MOTOR, SPEED CONTROLLED BY BOILER

BOILER SCHEDULE

TAG	MANUF	MODEL	HEATING CAPACITY			CONNECTIONS				ELECTRICAL			WEIGHT (LBS)	REMARKS
			INPUT-MAX	INPUT-MIN	AFUE	GAS	WATER	AIR	VENT	VOLTAGE	PHASE	FLA		
	LOCHINVAR	MODEL FTCL500	500 MBH	50 MBH	96%	1"	2"	4"	4"	120	1	4	560	1, 2, 3, 4, 5, 6, 7

REMARKS:
1. BACKNET M5PT COMMUNICATIONS
2. CONDENSATE NEUTRALIZER KIT
3. HIGH & LOW GAS PRESSURE SWITCHES
4. LOW WATER CUTOFF W/MANUAL RESET
5. VARIABLE SPEED BOILER PUMP

NOTES:
1. ACCEPTABLE MANUFACTURER'S
L1. LOCHINVAR
L2. CLEVER BROOKS
2. MAXIMUM OPERATING PRESSURE 160 PSI
3. MAXIMUM DELTA P ON BOILER 4.5 PSI
4. BOILERS HAVE BEEN DESIGNED BASED ON 180°F LBT AND A 20°F DELTA (EXISTING FAN COILS SELECTED AT 180°F EWT ON COIL)

HOT WATER UNIT HEATER SCHEDULE

TAG	MANUF	MODEL	HEATING PERFORMANCE								AIRFLOW		ELECTRICAL	WEIGHT	REMARKS
			ROWS	MBH	EAT	LAT	EWT	LWT	GPM	ΔP	CFM	HP			
	STERLING	HS-012B	1	29.8	40	82.1	140	120	5.3	2.0'	1000	1/20	120V, 1Ø 18 MCA 15 MOCP	50	1, 2

REMARKS:
1. FAN GUARDS
2. 3RD PARTY THERMOSTAT

GAS VALVE SCHEDULE

TAG	DESCRIPTION	MODEL	SIZE	FLOW RATE	CV	WEIGHT	ACCESSORIES
	GAS SHUNT VALVE	ASCO MODEL 825	1/2" PIPE	1800 CFH MAX	35	30 LBS	FLANGED CONNECTION, 5 PSI OPERATIONAL DIFFERENTIAL MAXIMUM

AIR/DIRT SEPARATOR SCHEDULE

TAG	DESCRIPTION	MODEL	PIPE SIZE	FLOW RATE	WEIGHT	ACCESSORIES
	AIR/DIRT SEPARATOR	TACO MODEL 4903ADR-25	3"	40 GPM 13 - MAX	135 LBS	FLANGED CONNECTION, BLOW DOWN VALVE, AIR VENT

EXPANSION TANK SCHEDULE

TAG	MANUF	MODEL	VOLUME		DIMENSIONS		WEIGHT (LBS)	REMARKS
			TOTAL	ACCEPT	DIAMETER	HEIGHT		
	TACO	CA25-125	57	57	16"	59"	765	1, 2

REMARKS:
1. DIAPHRAGM TYPE EXPANSION TANK
2. ASME RATED

NOTES:
ASME PRESSURE RATINGS
L ET-1 = 160 PSI

CHEMICAL POT FEEDER SCHEDULE - PROVIDED BY SPWD

SYMBOL	DESCRIPTION	MODEL	VOLUME	PIPE SIZE	DIMENSION	WEIGHT	ACCESSORIES
	BYPASS CHEMICAL POT FEEDER PROVIDED BY SPWD INSTALLED BY CONTRACTOR	ELBI MODEL P85-200V	5 GALLONS	3/4"	10" DIA 24" TALL	72	VICTAULIC TOP CLOSURE SOCK FILTER WITH HANGER ASSEMBLY

BOILER MAGNETIC SEPARATION FILTER SCHEDULE

TAG	DESCRIPTION	MODEL	PIPE SIZE	FLOW RATE	WEIGHT	ACCESSORIES
	MAGNETIC SEPARATION FILTER	BOILERMAG BMTX200/3	3"	40 GPM	100 LBS	-

DEMNERALIZER SCHEDULE

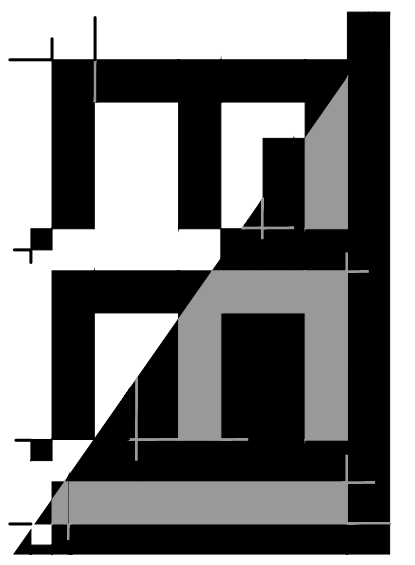
TAG	DESCRIPTION	MODEL	PIPE SIZE	FLOW RATE	WEIGHT	ACCESSORIES
	INLINE DEMNERALIZER	AXIOM PUROPAL DEMNERALIZER	3/4"	5 GPM	55 LBS	-

FILTER SCHEDULE

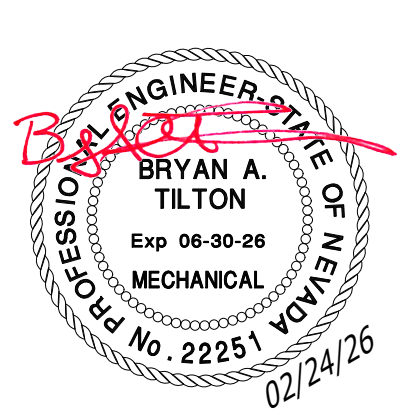
TAG	DESCRIPTION	MODEL	PIPE SIZE	FLOW RATE	WEIGHT	ACCESSORIES
	INLINE FILTRATION	AXIOM MODEL SFF-10	3/4"	10 GPM	15 LBS	-

GAS DETECTOR SCHEDULE

TAG	DESCRIPTION	MODEL	ELECTRICAL	WEIGHT	ACCESSORIES
	COMBINATION CARBON MONOXIDE & METHANE DETECTOR	MINI HERLIN MODEL CHMCO	120V, 1Ø 3 WATTS	1 LBS	ALARM STROBE RELAY, EMERGENCY SHUT-OFF BUTTON WITH TWIST RESET, 24V ALARM STROBE



1000 P. O. BOX 1000
RENO, NV 89502
F. 775-855-1051 T. 775-852-2912
REGISTRATION NO. 22251



STEWART BUILDING 107
BOILER PLANT RENOVATION
 SPWD 25-M03-07
 5500 SNYDER AVE #107
 CARSON CITY, NEVADA 89701

REVISIONS

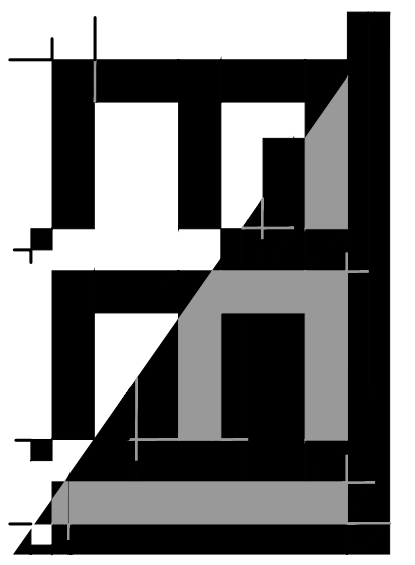
DRAWING TITLE
MECHANICAL SCHEDULES & NOTES

date: 02/24/26
job number: 25081
drawn: BAT
checked: BAT

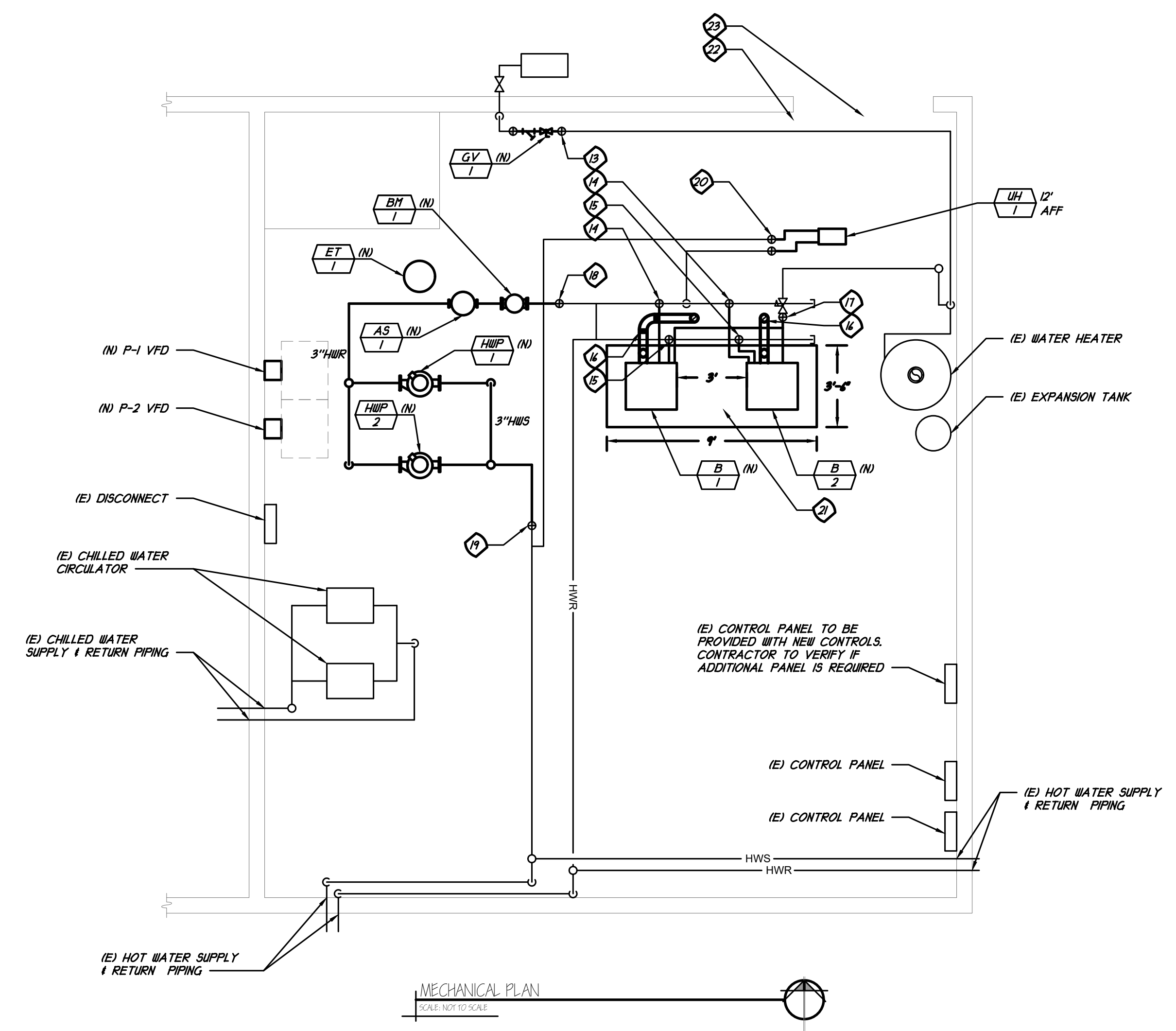
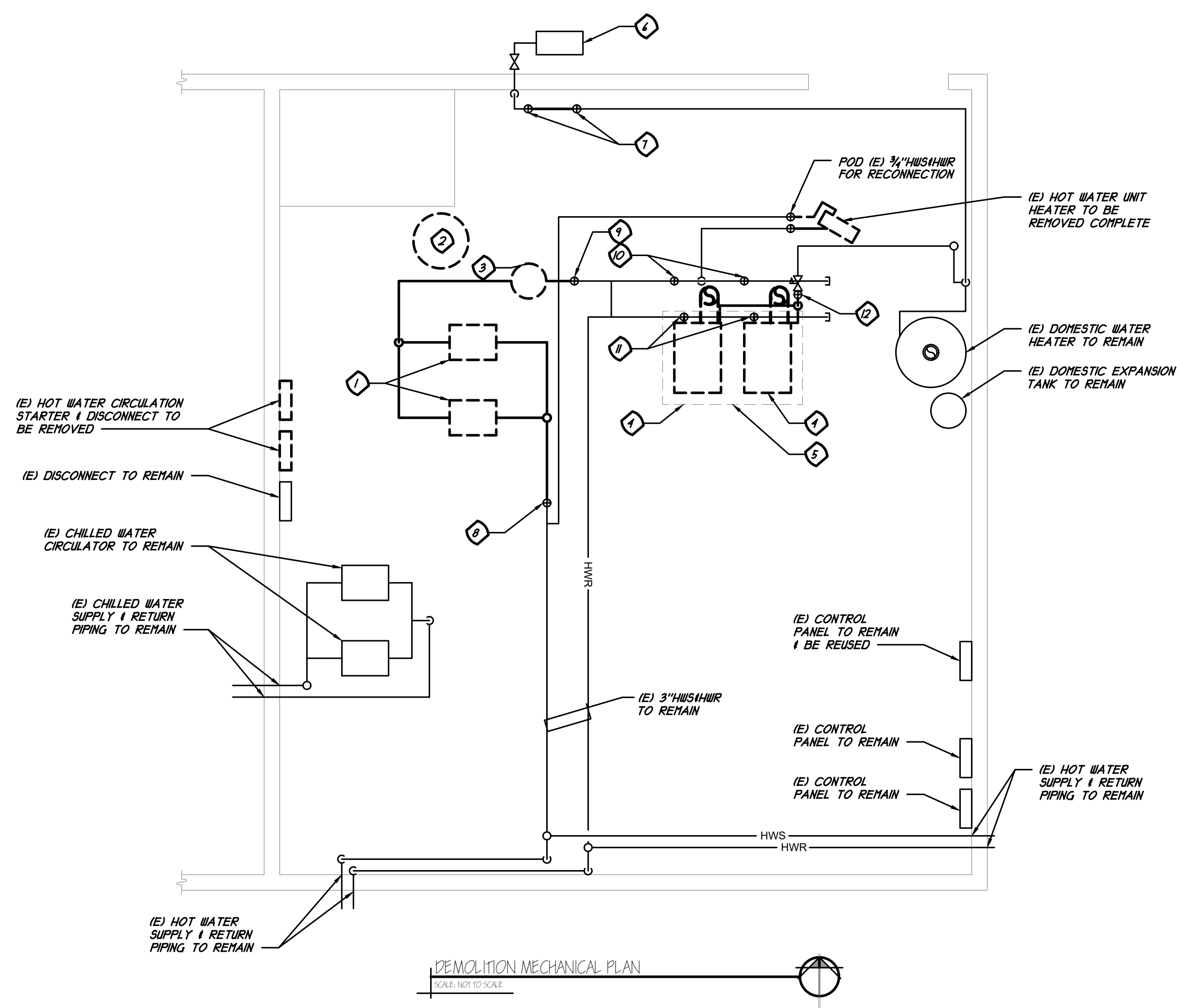
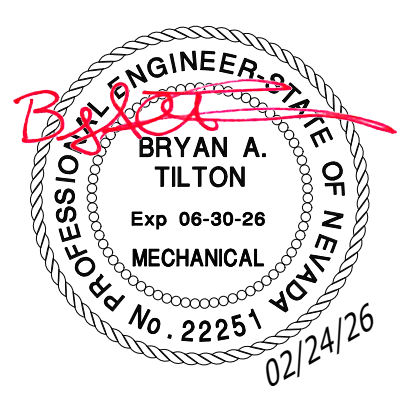
MO.I

KEYED NOTES:

- 1 (E) CIRCULATION PUMP TO BE REMOVED COMPLETELY
- 2 (E) EXPANSION TANK TO BE REMOVED COMPLETELY
- 3 (E) AIR SEPARATOR TO BE REMOVED COMPLETELY
- 4 (E) BOILER TO BE REMOVED COMPLETELY
- 5 (E) HOUSEKEEPING PAD TO BE REMOVED COMPLETELY
- 6 (E) GAS METER TO REMAIN
- 7 (E) GAS METER TO REMAIN
- 8 (E) GAS METER TO REMAIN
- 9 (E) GAS METER TO REMAIN
- 10 (E) GAS METER TO REMAIN
- 11 (E) GAS METER TO REMAIN
- 12 (E) GAS METER TO REMAIN
- 13 (E) GAS METER TO REMAIN
- 14 (E) GAS METER TO REMAIN
- 15 (E) GAS METER TO REMAIN
- 16 (E) GAS METER TO REMAIN
- 17 (E) GAS METER TO REMAIN
- 18 (E) GAS METER TO REMAIN
- 19 (E) GAS METER TO REMAIN
- 20 (E) GAS METER TO REMAIN
- 21 (E) GAS METER TO REMAIN
- 22 (E) GAS METER TO REMAIN
- 23 (E) GAS METER TO REMAIN



10497 PEOPLE'S BUILDING GROUP
 P.L.L.C.
 1177
 10497 PEOPLE'S BUILDING GROUP
 P.L.L.C.
 1177-854-155 F. 775-892-2912
 RESIDENCE: 1177-11-226



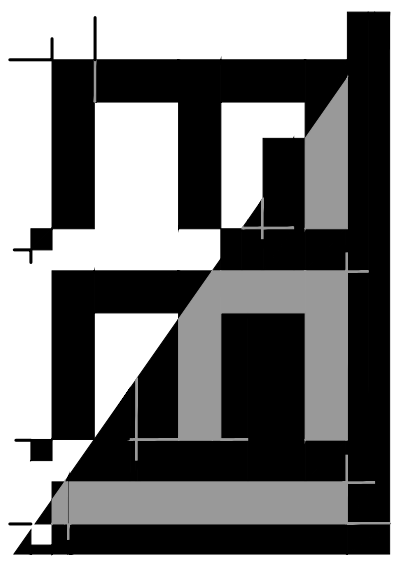
STEWART BUILDING 107
BOILER PLANT RENOVATION
 SPWD 25-M03-07
 5500 SNYDER AVE #107
 CARSON CITY, NEVADA 89701

REVISIONS

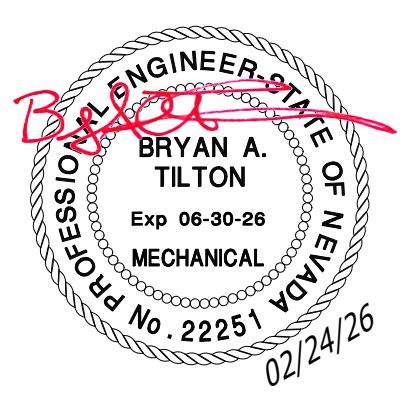
DRAWING TITLE
MECHANICAL PLANS

date: 02/24/26
 job number: 25081
 drawn: BAT
 checked: BAT

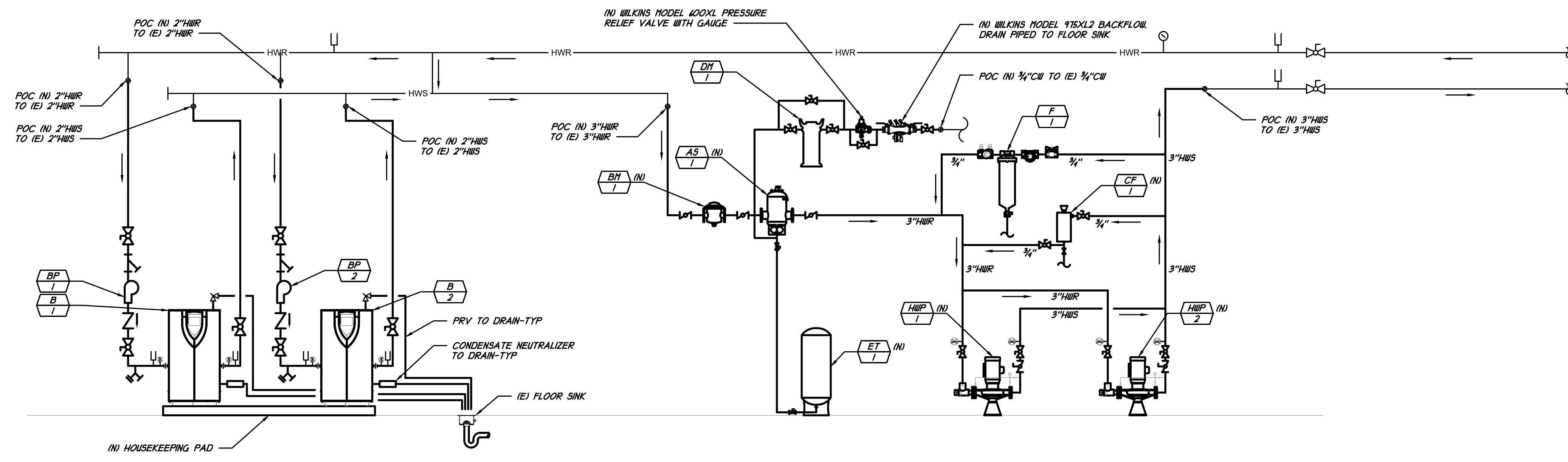
MI.1



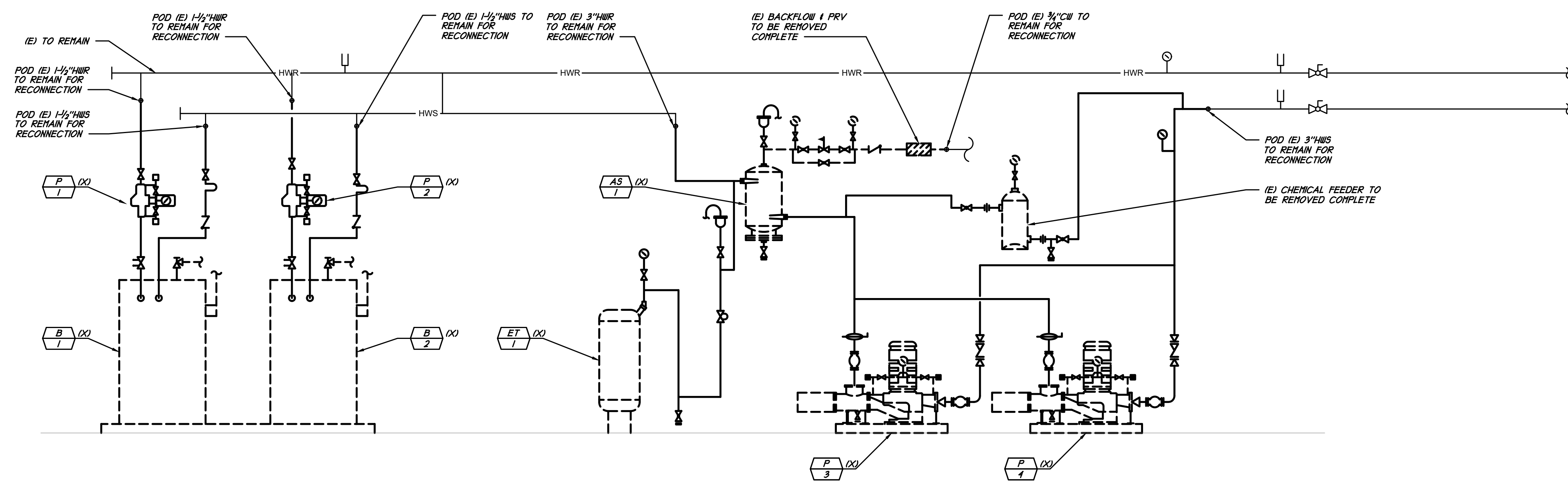
M2 ENGINEERING
 10497 POOLE BLVD SUITE 100
 LAS VEGAS, NV 89123
 P. 775-855-1055 F. 775-855-2502
 RESIDENTIAL@M2EN.COM



STEWART BUILDING 107
BOILER PLANT RENOVATION
 SPWD 25-M03-07
 5500 SNYDER AVE #107
 CARSON CITY, NEVADA 89701



BOILER PIPING DIAGRAM
 SCALE: NOT TO SCALE



DEMOLITION BOILER PIPING DIAGRAM
 SCALE: NOT TO SCALE

NOTE:

- CONTRACTOR SHALL FLUSH AND CLEAN ENTIRE HOT WATER PIPING SYSTEM THROUGHOUT THE BUILDING.
- CONTRACTOR SHALL PULL AND CLEAN ALL FAN COIL STRAINERS IN EXISTING SYSTEM. EXISTING SYSTEM CONSISTS OF 48 FAN COILS

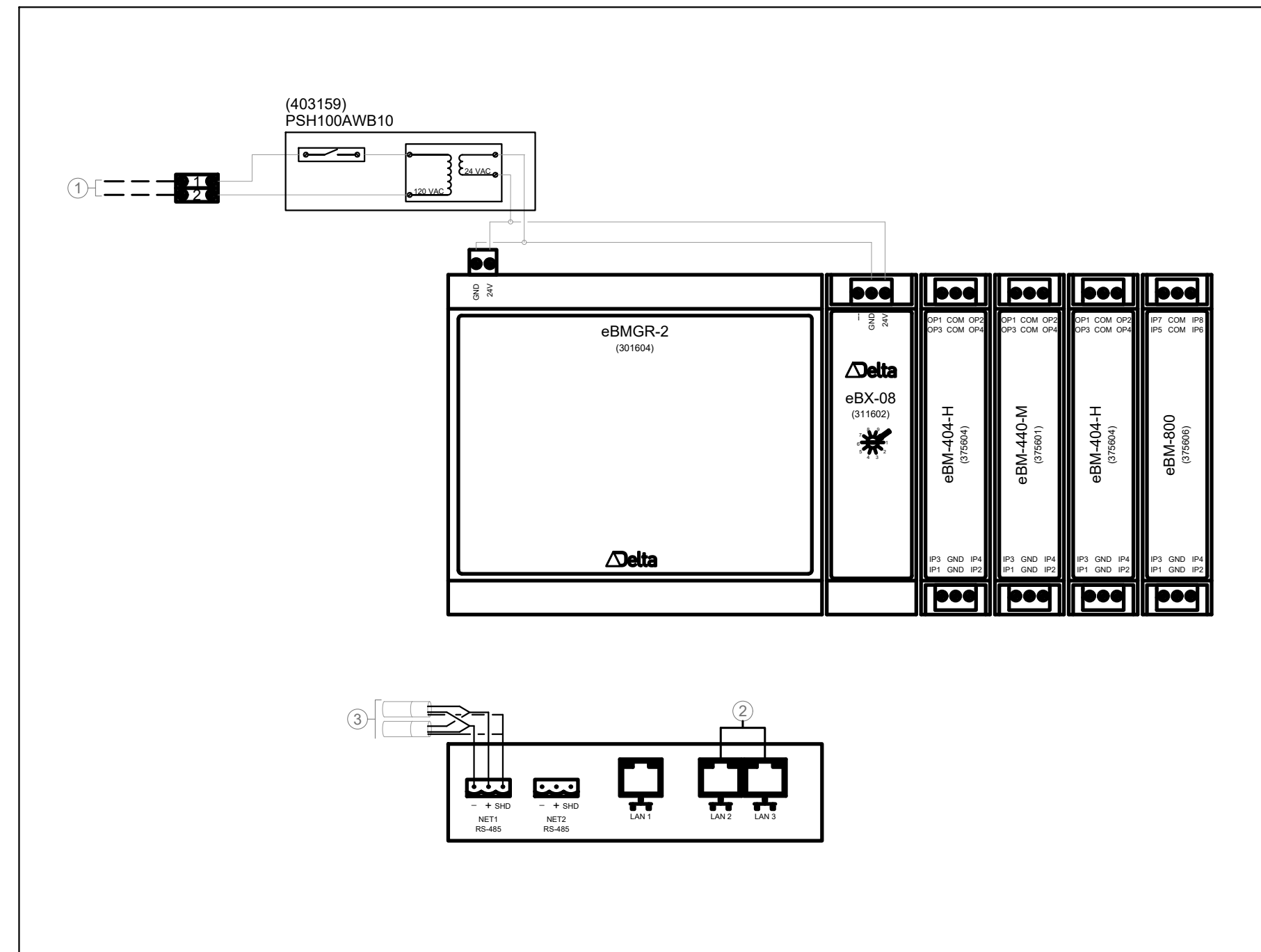
REVISIONS

DRAWING TITLE
BOILER PIPING DIAGRAMS

date: 02/24/26
 job number: 25081
 drawn: BAT
 checked: BAT

M2.1

RE-USE EXISTING CONTROL ENCLOSURE AND BACKPLATE



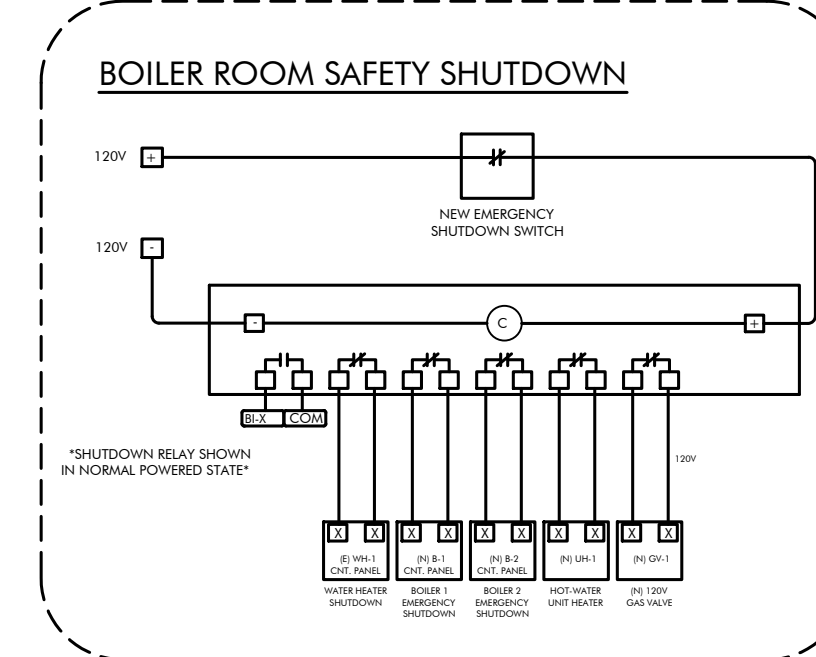
- ① 120V PROVIDED BY ELECTRICAL CONTRACTOR
- ② ETHERNET NETWORK. SEE NETWORK ARCHITECTURE FOR FULL SEQUENCE OF DEVICES.
- ③ BACnet MS/TP COMMUNICATION WITH BOILERS.

BOILER ROOM CONTROLLER

SCALE: N15

3
M3.1

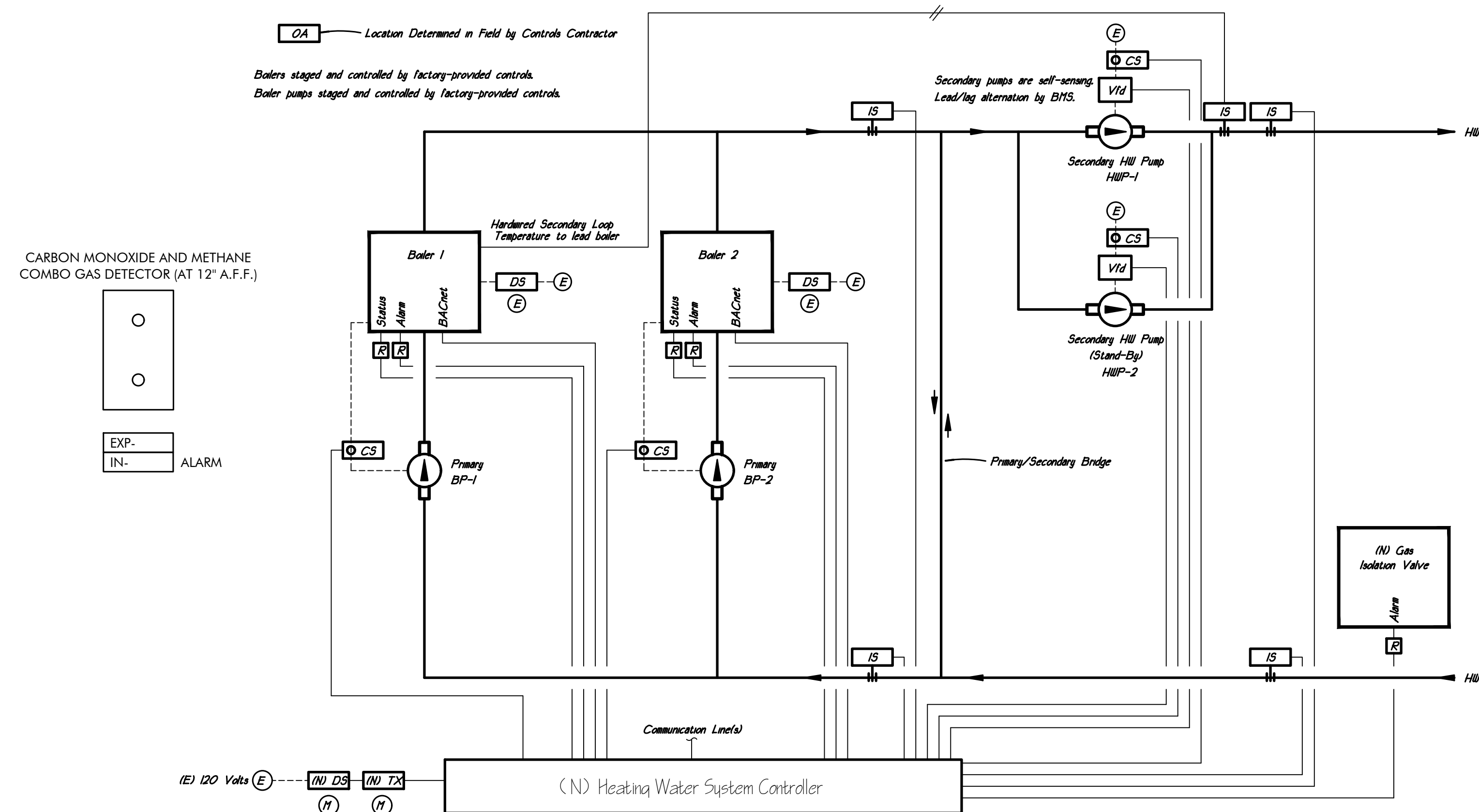
eBMGR-TCH-2 Hot Water System Controller		
Controller No.:		
Object Type	Instance	Point Name
eBM-404-H		
AI	1101	Secondary Loop Hot Water Return Temperature
AI	1102	Primary Loop Hot Water Return Temperature
AI	1103	BP-1 Status
AI	1104	BP-2 Status
BO	1101	Boiler 1 Enable
BO	1102	Boiler 2 Enable
BO	1103	-spare-
BO	1104	-spare-
eBM-440-M		
AI	1201	Boiler 1 Status
AI	1202	Boiler 1 Alarm
AI	1203	Boiler 2 Status
AI	1204	Boiler 2 Alarm
AO	1201	-spare-
AO	1202	-spare-
AO	1203	-spare-
AO	1204	-spare-
eBM-404-H		
AI	1301	P-1 Status
AI	1302	P-1 Alarm
BI	1303	P-2 Status
BI	1304	P-2 Alarm
BO	1301	P-1 Enable
BO	1302	P-2 Enable
BO	1303	-spare-
BO	1304	-spare-
eBM-800		
BI	1401	Gas Isolation Valve
AI	1402	Primary Loop Hot Water Supply Temperature
AI	1403	Secondary Loop Hot Water Supply Temperature
BI	1404	Emergency Shut-Down Button
UI	1405	-spare-
UI	1406	-spare-
UI	1407	-spare-
UI	1408	-spare-



EMERGENCY SHUNT WIRING DIAGRAM

SCALE: NOT TO SCALE

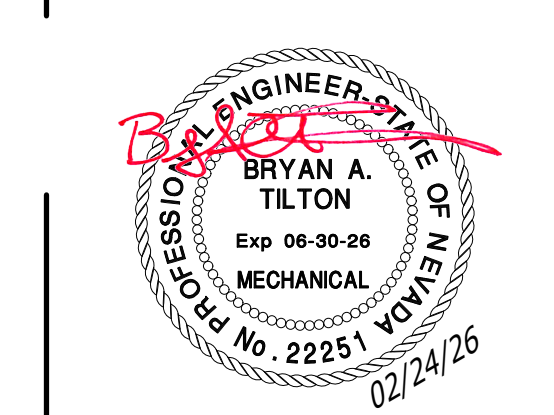
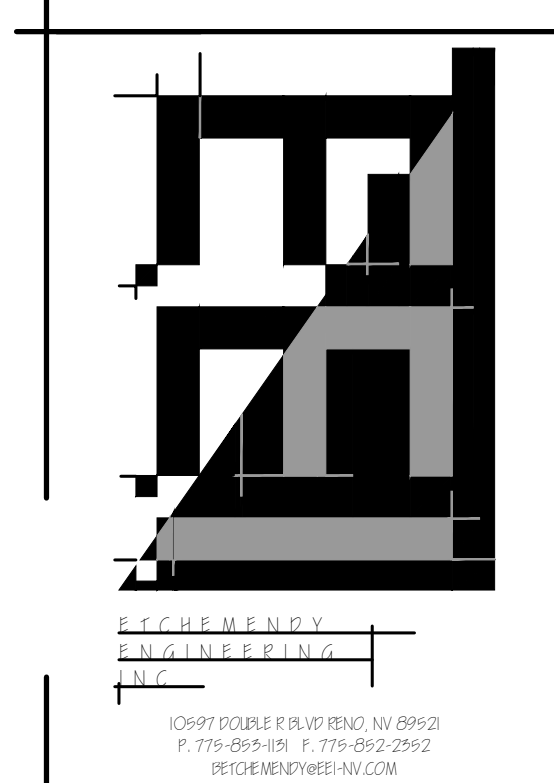
2
M3.1



BOILER PLAN CONTROL DIAGRAM

SCALE: 1/4" = 1'-0"

1
M3.1



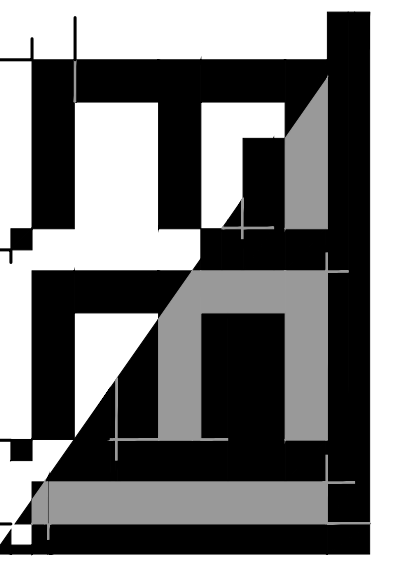
STEWART BUILDING 107
BOILER PLANT RENOVATION
 SPWD 25-M03-07
 5500 SNYDER AVE #107
 CARSON CITY, NEVADA 89701

REVISIONS

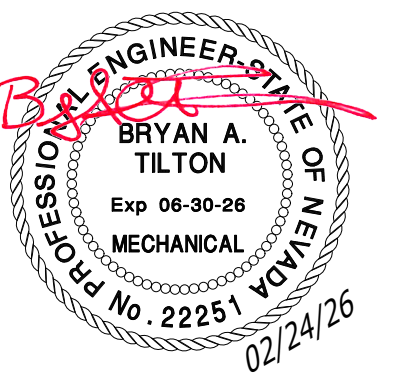
DRAWING TITLE
CONTROLS DIAGRAMS

date: 02/24/26
 job number: 25081
 drawn: BAT
 checked: BAT

M3.1



10497 PEOPLE BLVD SUITE 100
F. 775-854-3511 T. 775-852-2502
RESIDENCY WEST-10-236



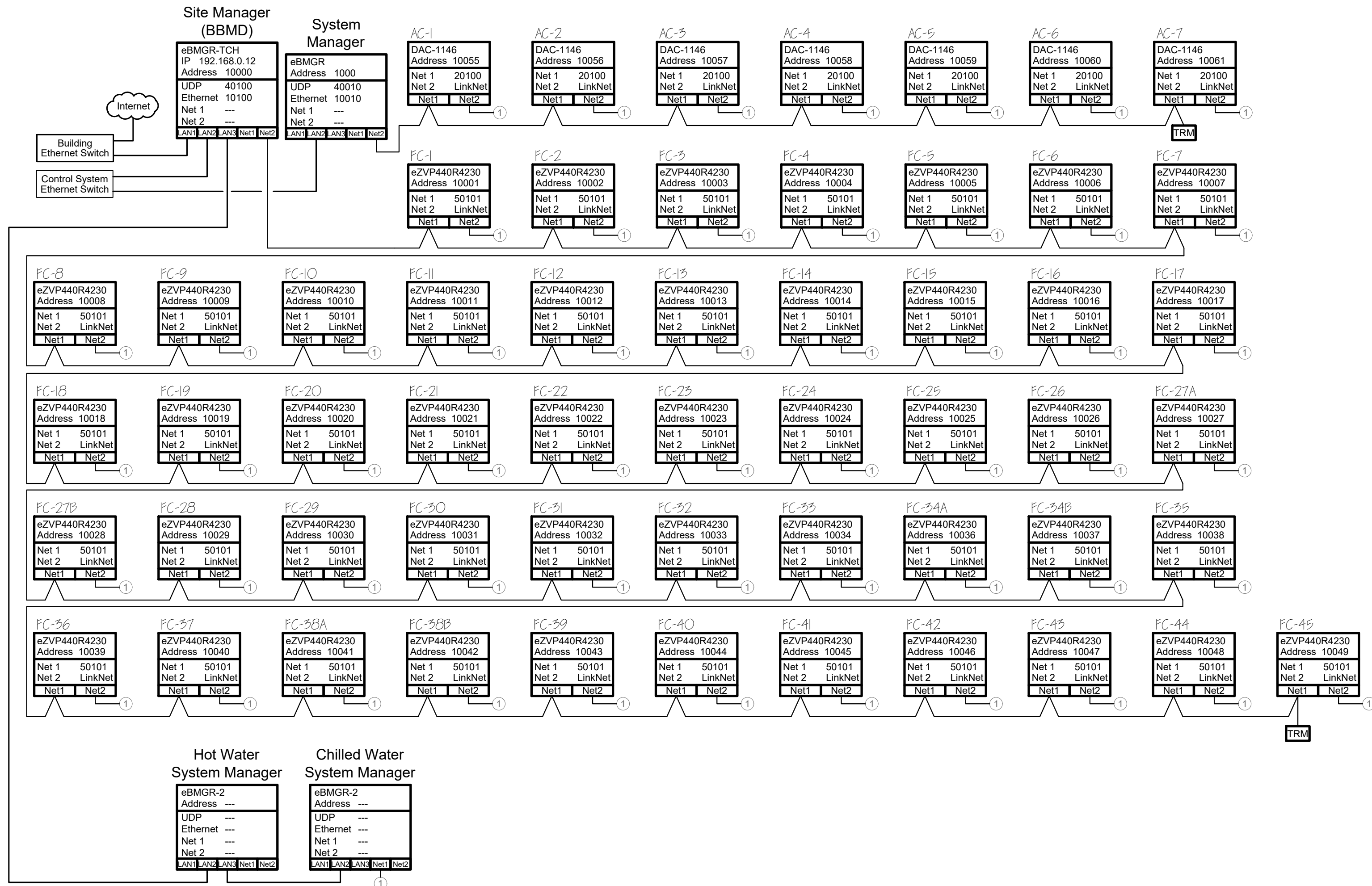
STEWART BUILDING 107
BOILER PLANT RENOVATION
SPWD 25-M03-07
5500 SNYDER AVE #107
CARSON CITY, NEVADA 89701

REVISIONS

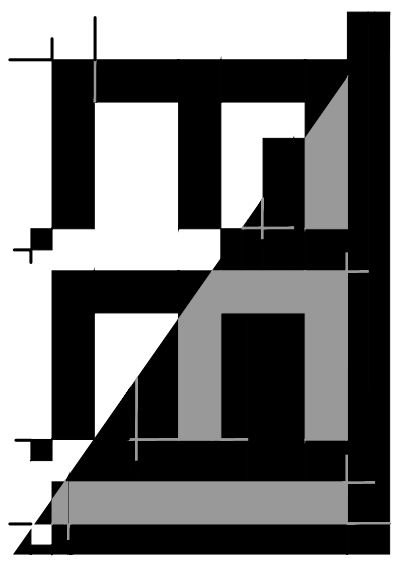
DRAWING TITLE
**CONTROLS
DIAGRAMS**

date: 02/24/26
job number: 25081
drawn: BAT
checked: BAT

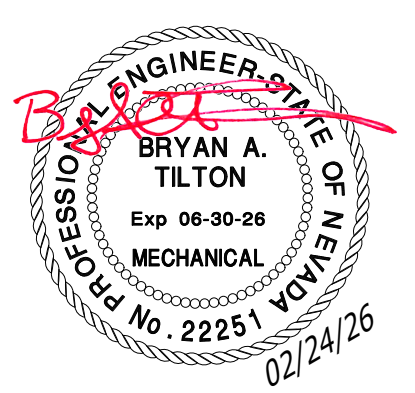
M3.2



CONTROL SYSTEM ARCHITECTURE
SCALE: NOT TO SCALE



STEWART BUILDING 107
SPWD 25-M03-07
5500 SNYDER AVE #107
CARSON CITY, NEVADA 89701



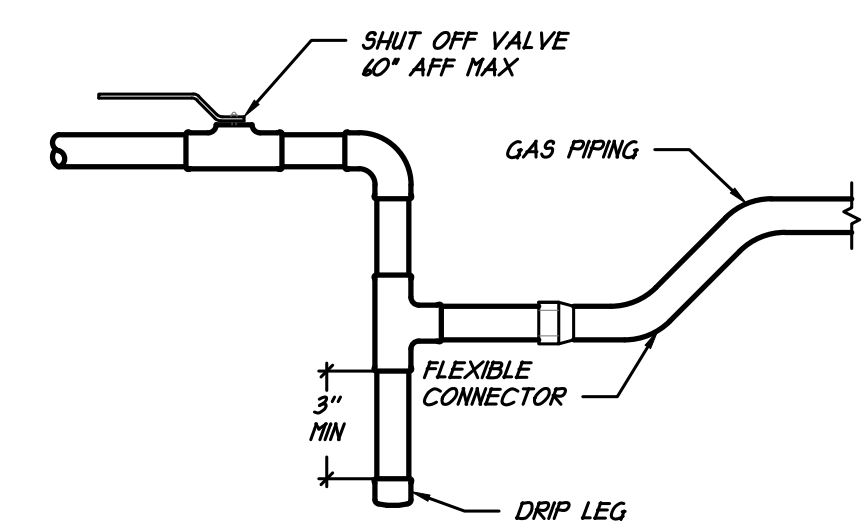
BOILER PLANT RENOVATION

REVISIONS

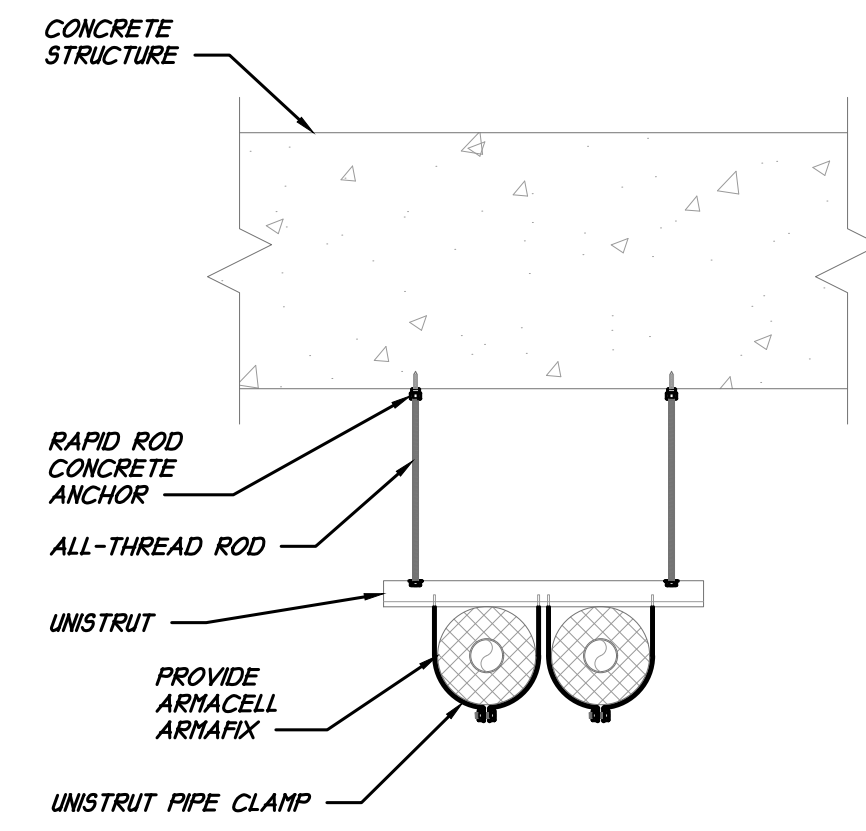
DRAWING TITLE
MECHANICAL
DETAILS

date: 02/24/26
job number: 25081
drawn: BAT
checked: BAT

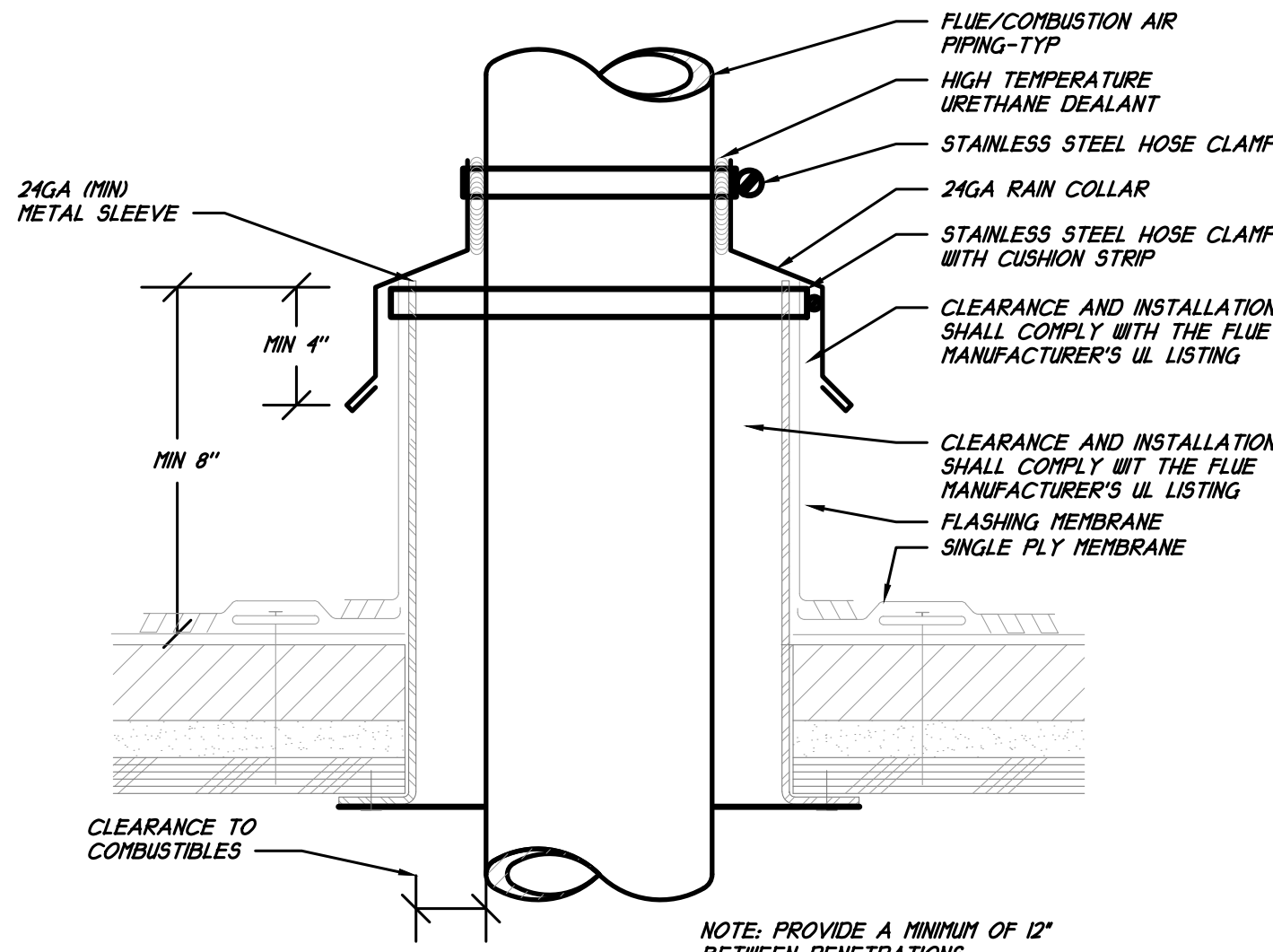
M4.1



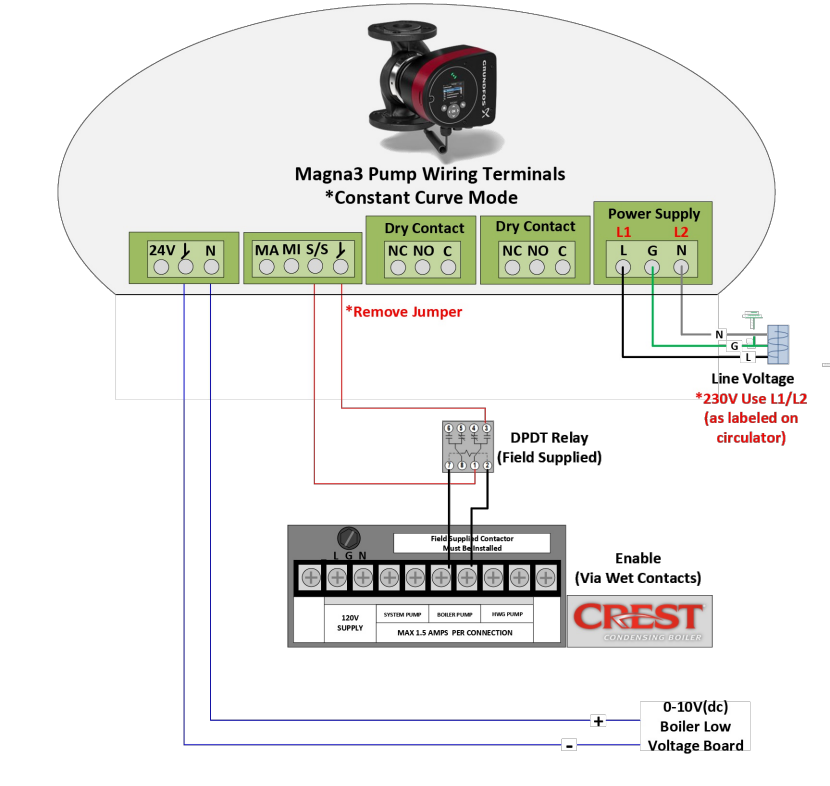
GAS PIPE TERMINATION DETAIL
SCALE: NOT TO SCALE



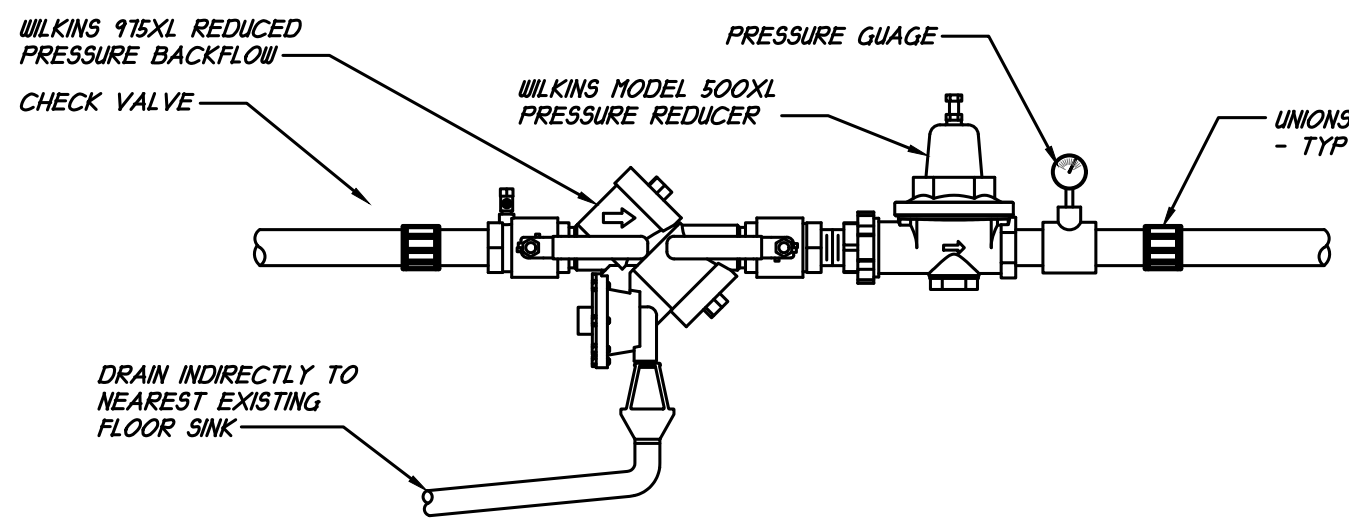
PIPING SUPPORT DETAILS
SCALE: NOT TO SCALE



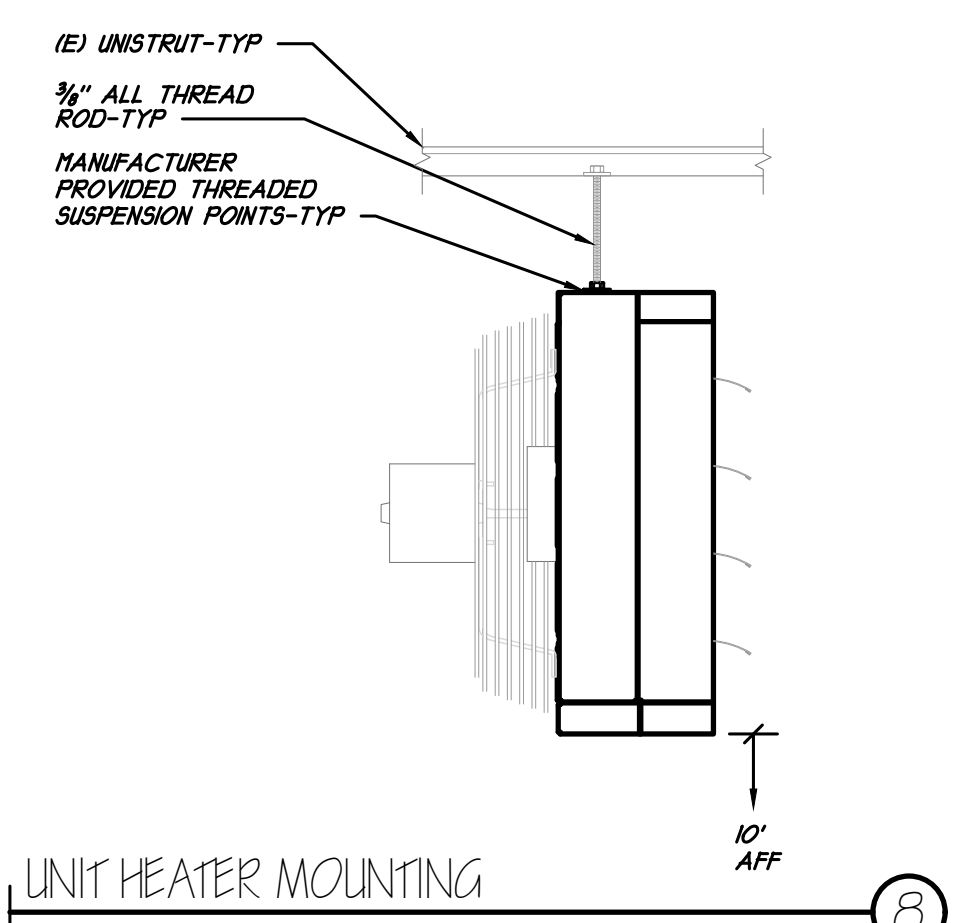
FLUE DUCT THRU ROOF
SCALE: NOT TO SCALE



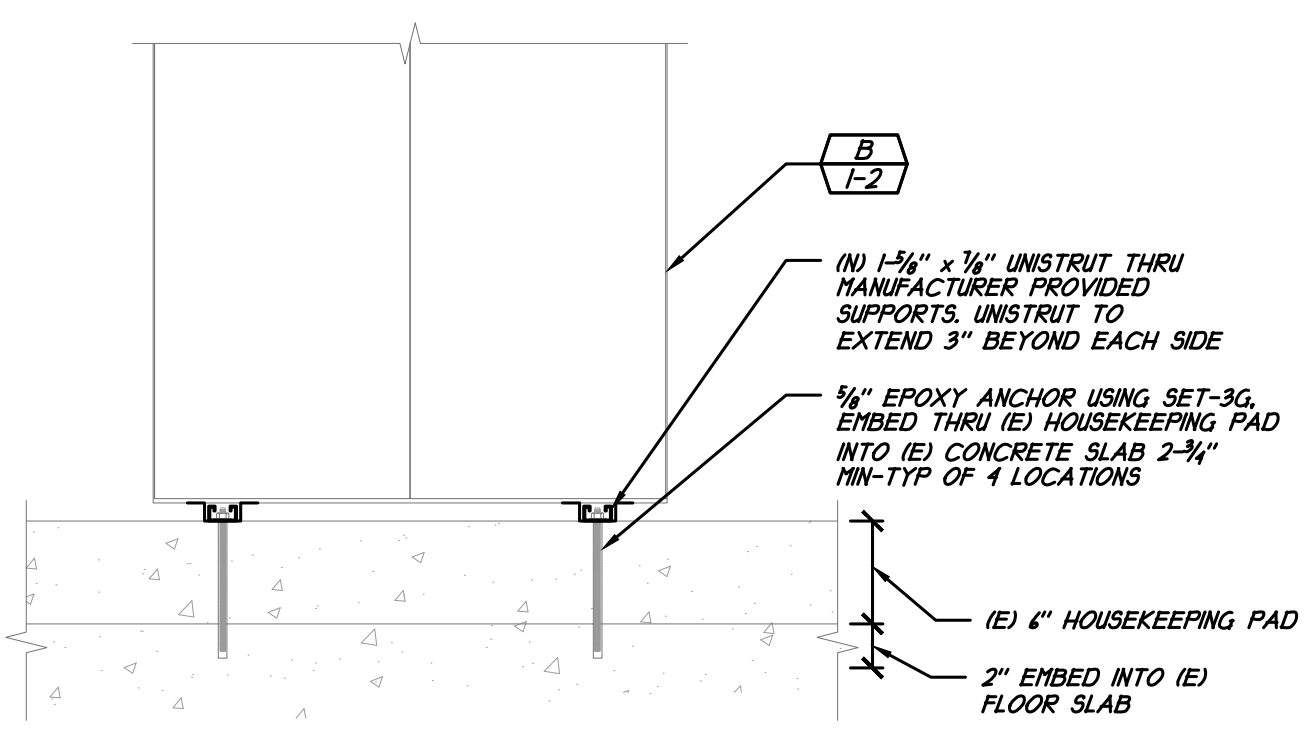
BOILER CIRCULATION PUMP WIRING
SCALE: NOT TO SCALE



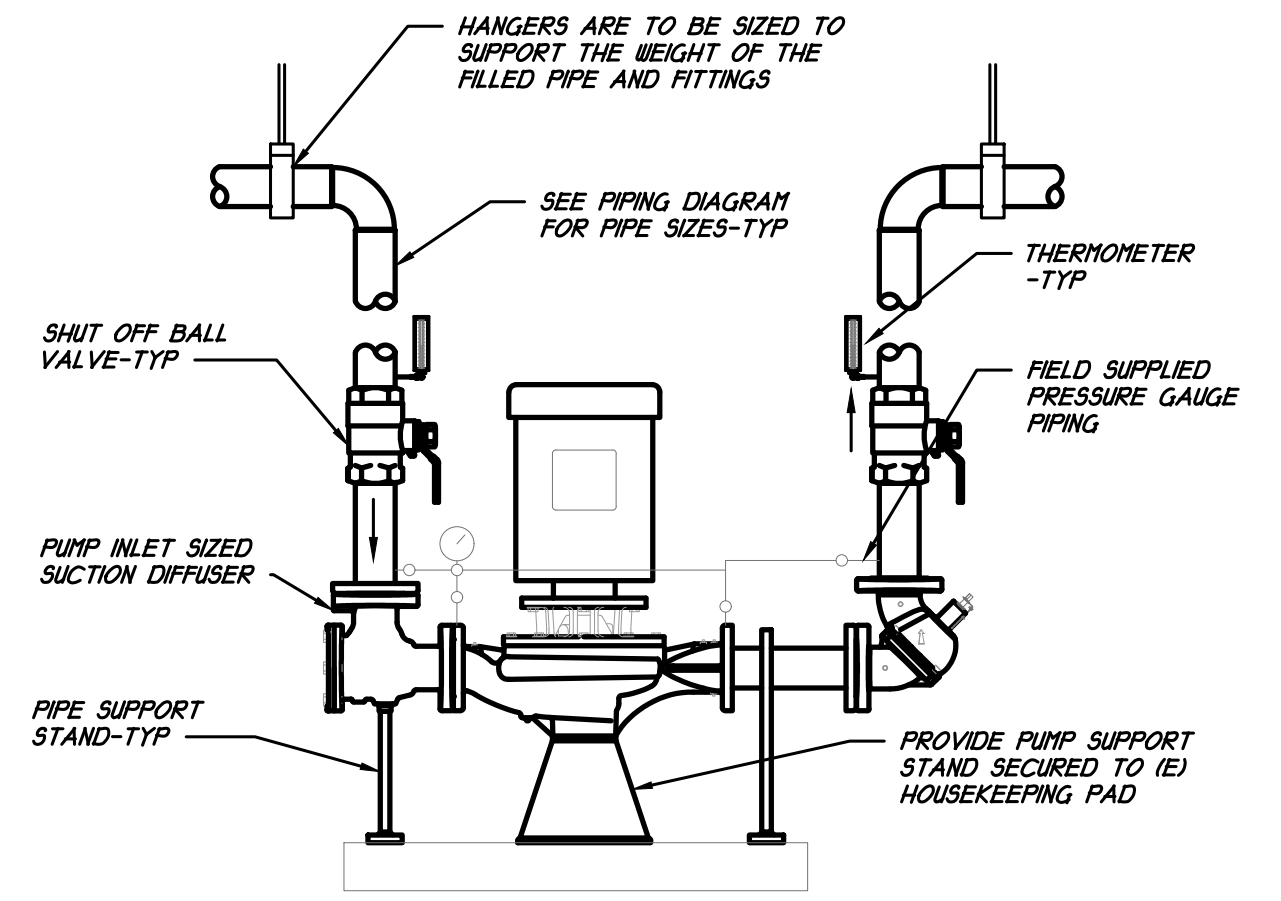
EQUIPMENT CONNECTION BACKFLOW PREVENTION DETAIL
SCALE: NOT TO SCALE



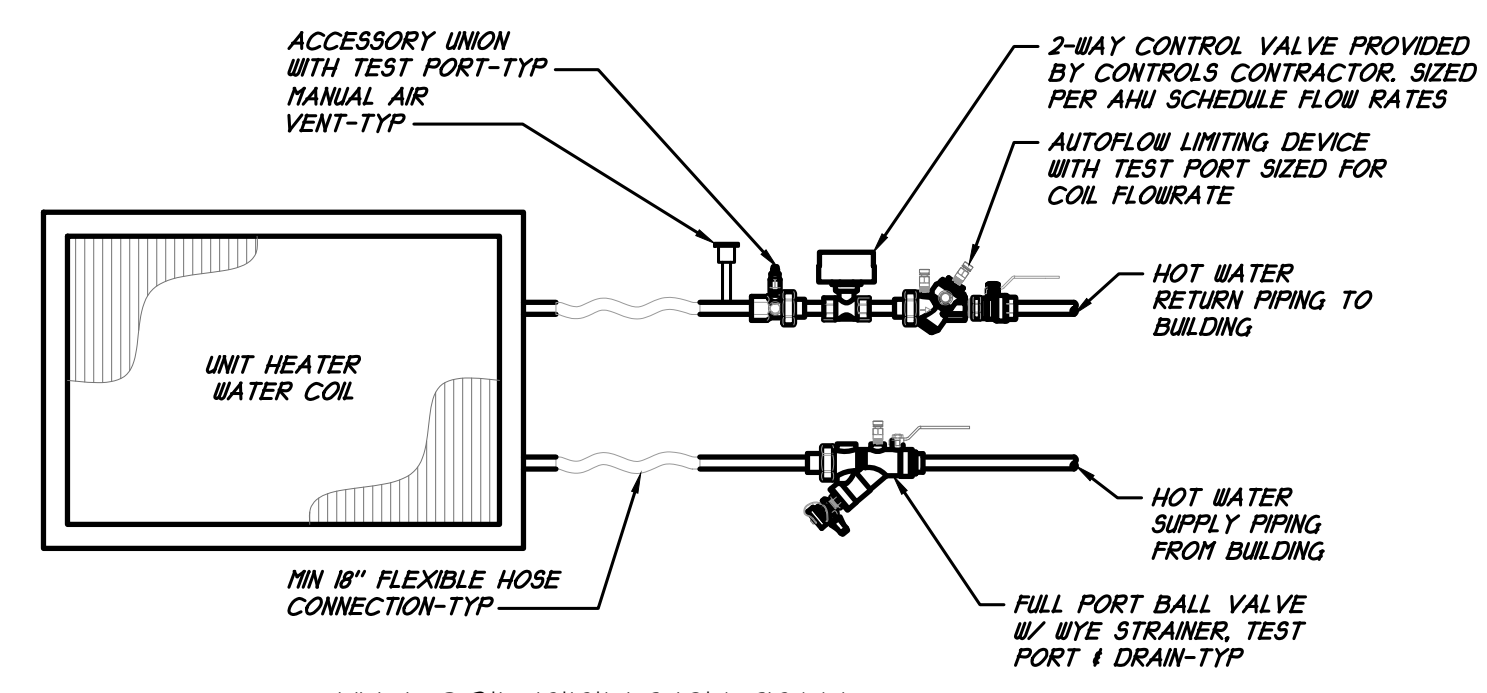
UNIT HEATER MOUNTING
SCALE: NOT TO SCALE



BOILER MOUNTING
SCALE: NOT TO SCALE



CIRCULATION PUMP MOUNTING
SCALE: NOT TO SCALE



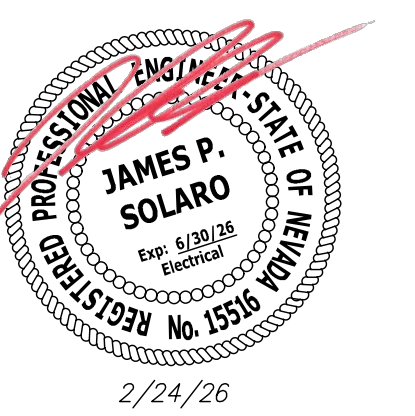
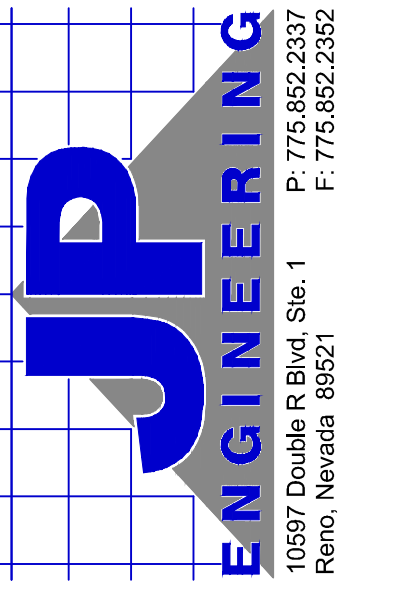
UH-1 COIL PIPING DIAGRAM
SCALE: NOT TO SCALE

SPECIFICATIONS

ITEM	DESCRIPTION	ITEM	DESCRIPTION
16.1	STANDARDS AND CODES: ALL ELECTRICAL WORK SHALL BE PERFORMED IN ACCORDANCE WITH THE LATEST EDITION OF THE NATIONAL ELECTRICAL CODE (NEC), AS WELL AS ALL APPLICABLE STATE AND LOCAL CODES AND ORDINANCES. THIS DOES NOT RELIEVE THE CONTRACTOR FROM FURNISHING AND INSTALLING WORK SHOWN OR SPECIFIED WHICH MAY EXCEED THE REQUIREMENTS OF SUCH ORDINANCES, LAWS, REGULATIONS AND CODES.	16.17	CODE COMPLIANCE: A. WORKING CLEARANCE: • THE CONTRACTOR SHALL VERIFY THAT ALL ELECTRICAL EQUIPMENT MEETS THE CLEARANCE REQUIREMENTS OF NEC 110.26. DRAWINGS REPRESENT CLEARANCES ARE MET AS DESIGNED, ANY DEVIATION SHALL ALSO MEET THIS REQUIREMENT.
16.2	COMPLETE INSTALLATION: PROVIDE ALL LABOR, MATERIALS, EQUIPMENT, TOOLS, ACCESSORIES, ETC., NECESSARY TO ACCOMPLISH A COMPLETE ELECTRICAL SYSTEM IN ACCORDANCE WITH THE PLANS TOGETHER WITH THE SPECIFICATIONS.	16.19	CIRCUITING: ALL WIRING SHALL BE IN CONDUIT, MINIMUM 3/4" C, CONCEALED EXCEPT WHERE NOTED. EMT WITH STEEL SET SCREW INSULATED THROUGH FITTINGS MAY BE USED IN DRY, PROTECTED INTERIOR LOCATIONS. PVC SCHEDULE 40 SHALL BE USED BELOW GRADE AT MINIMUM -24". WRAPPED RIGID ELBOWS AND RISERS SHALL BE USED FOR ALL THROUGH-GRADE TRANSITIONS AND STUB-UPS. RGS OR MC CONDUIT WITH THREADED FITTINGS SHALL BE USED IN ALL LOCATIONS WHERE EXPOSED TO THE ELEMENTS OR SUBJECT TO PHYSICAL DAMAGE. METAL-CLAD CABLE (TYPE MC) IS NOT PERMITTED. ENT IS NOT ALLOWED. CONNECT RECESSED AND SUSPENDED LIGHTING FIXTURES, MOTORIZED AND VIBRATING EQUIPMENT WITH STEEL FLEX. ALL CONDUIT SHALL HAVE PULL CORD IF OTHERWISE EMPTY.
16.3	DRAWINGS: DATA PRESENTED ON THESE DRAWINGS SHALL BE FIELD VERIFIED SINCE ALL DIMENSIONS, LOCATIONS, AND LEVELS ARE GOVERNED BY ACTUAL FIELD CONDITIONS. REVIEW ALL ARCHITECTURAL, STRUCTURAL, CIVIL, MECHANICAL AND SPECIALTY SYSTEMS DRAWINGS AND ADJUST ALL WORK TO MEET THE REQUIREMENTS ON CONDITIONS SHOWN THEREON. DO NOT SCALE ELECTRICAL PLANS FOR FIXTURE, DEVICE OR APPLIANCE LOCATIONS. USE CONFIGURED DIMENSIONS IF GIVEN OR CHECK ARCHITECTURAL OR MECHANICAL DRAWINGS.	16.20	WIRING: WIRE SHALL BE COPPER UNLESS OTHERWISE INDICATED. MINIMUM WIRE SIZE SHALL BE #12 AWG. INSULATION SHALL BE THW, THWN OR THHN.
16.4	COPYRIGHT: THESE PLANS, SPECIFICATIONS AND ALL RELATED ADDENDA AND DOCUMENTS CONSTITUTE COPYRIGHT MATERIALS OF JP ENGINEERING. ALL RIGHTS CONFERRED BY THE COPYRIGHT AND SIMILAR LAWS ARE RESERVED TO JP ENGINEERING. THESE MATERIALS SHALL REMAIN THE SOLE PROPERTY OF JP ENGINEERING AND MAY NOT BE REPRODUCED, DISTRIBUTED TO OTHERS OR USED FOR ANY PURPOSE WHATSOEVER WITHOUT THE PRIOR WRITTEN CONSENT OF JP ENGINEERING.	16.21	FUSES: FUSES SHALL BE SIZED PER ACTUAL NAMEPLATE OF EQUIPMENT SERVED. FUSES SHALL BE DUAL-ELEMENT, CURRENT-LIMITING, AND SHALL BE INTERCHANGEABLE BETWEEN FRAME SIZES WITH STANDARD FACTORY FUSE REDUCERS. FUSES SHALL BE AS FOLLOWS UNLESS OTHERWISE INDICATED: a. CIRCUITS 601 TO 6000 AMPERES SHALL BE PROTECTED BY CURRENT LIMITING BUSSMANN LOW-PEAK TIME-DELAY FUSES KRP-C - UL CLASS L b. CIRCUITS 0 TO 600 AMPERES SHALL BE PROTECTED BY CURRENT LIMITING BUSSMANN LOW-PEAK DUAL-ELEMENT FUSES LPN-RK (250 VOLTS) OR LPS-RK (600 VOLTS) - UL CLASS RK1 c. ALL INDIVIDUAL MOTOR CIRCUITS RATED 480 AMPERES OR LESS SHALL BE PROTECTED BY BUSSMANN LOW-PEAK DUAL-ELEMENT FUSES LPN-RK (250 VOLTS) OR LPS-RK (600 VOLTS) - UL CLASS RK1 OR L d. CIRCUIT BREAKER PANELS SHALL BE PROTECTED BY BUSSMANN LOW-PEAK DUAL-ELEMENT FUSES LPN-RK (250 VOLTS), LPS-RK (600 VOLTS) OR BUSSMANN LOW-PEAK TIME-DELAY FUSES - UL CLASS RK1 OR L e. ALL DUAL-ELEMENT FUSES SHALL HAVE SEPARATE OVERLOAD AND SHORT-CIRCUIT ELEMENTS.
16.5	LOCATIONS: INDICATED LOCATIONS OF ALL OUTLETS AND EQUIPMENT ARE SUBJECT TO CHANGE. SHIFT/RELOCATE, RECONFIGURE ANY OUTLET, EQUIPMENT OR CONNECTION POINT UP TO 10' AS DIRECTED BY ENGINEER, AT NO ADDED COST.	16.22	TEMPORARY CONSTRUCTION POWER: PROVIDE TEMPORARY ELECTRICAL POWER AND LIGHTING FOR ALL TRADES THAT REQUIRE SERVICE DURING THE COURSE OF THIS PROJECT. PROVIDE TEMPORARY SERVICE AND DISTRIBUTION AS REQUIRED. COMPLY WITH THE NEC AND OSHA REQUIREMENTS. (ENERGY COSTS BY OTHERS).
16.6	RECORD DRAWINGS: CONTRACTOR SHALL PROVIDE, PRIOR TO FINAL ACCEPTANCE AND OBSERVATION, ONE SET OF REVISED RECORD ELECTRICAL CONSTRUCTION DOCUMENTS IN PDF FORMAT INDICATING THE FOLLOWING ADDITIONAL INFORMATION: EXACT ROUTING OF ALL CONDUITS LARGER THAN 1" EXACT LOCATION OF ALL SERVICE GROUNDING/BONDING CONNECTIONS CONTRACTORS NAME, ADDRESS AND TELEPHONE NUMBER RECORD NOTATIONS SHALL BE CLEARLY DRAWN AT A DRAFTING APPEARANCE EQUAL TO THE ORIGINAL DRAWINGS. CONTRACTOR SHALL ALSO PROVIDE ALL OPERATING AND MAINTENANCE MANUALS PRIOR TO FINAL PAYMENT.	16.23	SUBMITTALS: BEFORE ORDERING ANY EQUIPMENT, CONTRACTOR SHALL SUBMIT SIX COPIES OF FACTORY SHOP DRAWINGS FOR ALL LIGHTING FIXTURES, SWITCHGEAR, PANELS, MOTOR CONTROLLERS, WIRING DEVICES, ETC. PROPOSED FOR THIS PROJECT.
16.7	EXAMINATION OF SITE AND EXISTING CONDITIONS: BEFORE SUBMITTING A PROPOSAL, CONTRACTOR SHALL EXAMINE THE SITE AND FAMILIARIZE HIMSELF WITH THE EXISTING CONDITIONS AND LIMITATIONS. NO EXTRAS WILL BE ALLOWED BECAUSE OF THE CONTRACTOR'S MISUNDERSTANDING OF THE AMOUNT OF WORK INVOLVED OR HIS LACK OF KNOWLEDGE OF ANY SITE CONDITIONS WHICH MAY AFFECT HIS WORK. ANY APPARENT VARIANCE OF THE DRAWINGS OR SPECIFICATIONS FROM THE EXISTING CONDITIONS AT THE SITE SHALL BE CALLED TO THE ATTENTION OF THE ENGINEER BEFORE SUBMITTING A PROPOSAL.	16.24	SUBSTITUTIONS: PROPOSED SUBSTITUTIONS SHALL BE EQUAL OR SUPERIOR TO SPECIFIED ITEMS IN ALL RESPECTS. DETERMINATION OF EQUALITY RESTS SOLELY WITH ENGINEER. SUBSTITUTIONS MUST BE SUBMITTED A MINIMUM OF 10 WORKING DAYS PRIOR TO BID FOR CONSIDERATION. PROPOSED SUBSTITUTIONS PROVIDED LATER WILL NOT BE REVIEWED OR ALLOWED. BID SUBSTITUTED MATERIAL WILL ONLY BE ALLOWED IF ACCEPTED IN WRITING BY ENGINEER.
16.8	EXISTING OUTLETS: EXISTING OUTLETS AND CIRCUITING NOT IN CONFLICT WITH NEW CONDITIONS SHALL REMAIN. EXTEND OUTLETS TO NEW SURFACES, CAULK AND PROVIDE JUMBO PLATES AS REQUIRED TO PRESENT A SERVICEABLE AND FINISHED APPEARANCE.	16.25	IDENTIFICATION: PROVIDE ENGRAVED NAMEPLATES FOR ALL SWITCHBOARDS, PANELS, TRANSFORMERS, DISCONNECTS, MOTOR STARTERS, CONTACTORS, TIME SWITCHES AND CABINETS. NAMEPLATES SHALL INCLUDE THE FOLLOWING INFORMATION AS APPLICABLE: DESIGNATION (i.e. PANEL A) FUNCTION (i.e. AIR HANDLER AH-1) VOLTAGE, PHASE, WIRE (i.e. 480 VOLT, 3Ø, 4W.) FEEDER SIZE (i.e. 4-#4/0 THWN CU IN 2" C.) SOURCE (i.e. SWITCHBOARD MSB)
16.9	EXISTING SWITCHGEAR: REUSE EXISTING SWITCHGEAR AND PANELS IN PLACE WHERE SO INDICATED. MODIFY AS REQUIRED TO ACCOMMODATE NEW WORK. PROVIDE NEW CIRCUIT BREAKERS AND/OR FUSES AS REQUIRED. REARRANGE EXISTING CIRCUITS WITHIN PANELS TO AGREE WITH NEW PANEL SCHEDULES. TRACE AND IDENTIFY ALL EXISTING CIRCUITS ON NEW RECORD PANEL SCHEDULES.	16.26	GUARANTEE: THE COMPLETE ELECTRICAL SYSTEM, AND ALL PORTIONS THEREOF, SHALL BE GUARANTEED TO BE FREE FROM DEFECTS IN WORKMANSHIP AND MATERIALS FOR A PERIOD OF ONE YEAR FROM DATE OF FINAL ACCEPTANCE. PROMPTLY REMEDY SUCH DEFECTS AND ANY SUBSEQUENT DAMAGE CAUSED BY THE DEFECTS OR REPAIR THEREOF AT NO EXPENSE TO THE OWNER. LAMPS ARE EXEMPT FROM THIS GUARANTEE, BUT SHALL BE NEW AT TIME OF FINAL ACCEPTANCE.
16.10	DEMOLITION: PROVIDE COMPLETE ELECTRICAL DEMOLITION: REMOVE EXISTING OUTLETS AND EQUIPMENT IN CONFLICT WITH NEW CONDITIONS. EXISTING CONDUITS REMOVED FROM SERVICE MAY BE ABANDONED IN PLACE IF IN A CONCEALED LOCATION. REMOVE ALL WIRE FROM ABANDONED RACEWAYS. CONTRACTOR SHALL INSURE CONTINUITY OF EXISTING CIRCUITING PASSING THROUGH DEMOLITION AREAS. EXTEND AND/OR RELOCATE AS NECESSARY. SHIFT/RELOCATE EXISTING EQUIPMENT AND CIRCUITING AS REQUIRED TO ACCOMMODATE NEW WORK.	16.27	COORDINATION: THE CIVIL, ARCHITECTURAL, MECHANICAL, KITCHEN AND INTERIOR DRAWINGS CONTAIN DETAIL DESCRIPTIONS, CIRCUITING AND CONNECTION REQUIREMENTS WHICH ARE PART OF DIVISION 16 RESPONSIBILITIES. ELECTRICAL CONTRACTOR SHOULD NOT SUBMIT BIDS ON THIS PROJECT BEFORE REVIEWING ALL PROJECT DRAWINGS, SPECIFICATIONS AND ADDENDA.
16.11	SALVAGE: ALL EXISTING EQUIPMENT REMOVED DURING THE COURSE OF THIS PROJECT SHALL BE OFFERED TO OWNER FOR SALVAGE. ANY EQUIPMENT SELECTED BY OWNER SHALL BE DELIVERED TO OWNER ON SITE. ALL REMAINING EQUIPMENT BECOMES THE PROPERTY OF THIS CONTRACTOR AND SHALL BE REMOVED FROM THE SITE.	16.28	ONGOING OPERATION: CONDUCT WORK TO MINIMIZE DISRUPTION OF OWNER'S ONGOING OPERATIONS. PROVIDE BARRICADES, NOISE ABATEMENT AND DUST CONTAINMENT MEASURES TO ENSURE THE SAFETY AND COMFORT OF PATRONS, STAFF AND WORKERS. INTERRUPTIONS OF EXISTING POWER, COMMUNICATIONS OR FIRE ALARM SYSTEMS SHALL BE PERFORMED ONLY AT SUCH TIMES AS DIRECTED BY RESIDENT ENGINEER. OUTAGES SHALL BE MOMENTARY IN NATURE. EACH SUCH OUTAGE (OR OPERATION WHICH MAY POSE RISK OF AN ACCIDENTAL OUTAGE) SHALL BE SCHEDULED 48 HOURS IN ADVANCE.
16.12	TESTING: PRIOR TO PLACING IN SERVICE, ALL ELECTRICAL SYSTEMS SHALL BE TESTED FOR OPENS, GROUNDS, AND PHASE ROTATION. THE MAIN SERVICE GROUND AND ALL LOCAL TRANSFORMER MADE GROUNDS SHALL BE MEGGER-TESTED.		
16.13	GROUNDING: TEST EXISTING SERVICE NEUTRAL FOR ADEQUACY AND FOR GROUND CONTINUITY. GROUND ALL EQUIPMENT AND SYSTEM NEUTRAL IN ACCORDANCE WITH ARTICLE 250 OF THE NEC. EQUIPMENT GROUNDS HAVE NOT BEEN SHOWN ON DRAWINGS - WHERE GROUND WIRES HAVE BEEN SHOWN THEY INDICATE AN INSULATED GROUND.		
16.14	EQUIPMENT STANDARDS: ALL MATERIALS AND EQUIPMENT SHALL BE NEW AND OF THE HIGHEST QUALITY AVAILABLE ("SPECIFICATION GRADE"). SERVICE EQUIPMENT SHALL BE FACTORY-ASSEMBLED COMMERCIAL-GRADE, CONFIGURED PER SERVING UTILITY STANDARDS. WIRING DEVICES SHALL BE SPECIFICATION GRADE WITH NYLON PLATES, WHITE UNLESS OTHERWISE NOTED, RAISED STEEL BOX COVERS MAY BE USED IN UTILITY AREAS.		
16.15	MATCH EXISTING: EXISTING EQUIPMENT AND SYSTEMS SHALL BE CONSIDERED A MINIMUM STANDARD TO BE MET, IF NOT OTHERWISE EXCEEDED BY THESE PLANS AND SPECIFICATIONS. NEW MATERIALS AND EQUIPMENT SHALL MATCH EXISTING IN APPEARANCE AND FUNCTION.		
16.16	TAMPER-PROOF: ALL EQUIPMENT AND CIRCUITING ACCESSIBLE BY THE PUBLIC SHALL BE TAMPER-PROOF AND VANDAL RESISTANT. OPENABLE DEVICES AND EQUIPMENT SHALL BE PADLOCKABLE.		

MASTER SYMBOL LIST

SIGNAL OUTLETS		RECEPTACLES		ABBREVIATIONS	
▽	TELEPHONE: 4S BOX WITH SINGLE GANG MUD RING UON, +18" AFF UON	⊕	DUPLEX: 20A, 125V, NEMA 5-20, +18" AFF	℄	CENTERLINE
▽	TELEPHONE: 4S BOX WITH SINGLE GANG MUD RING UON, WALL MOUNT +54" AFF UON	⊕	DOUBLE DUPLEX: 20A, 125V, NEMA 5-20, +18" AFF	AFF	ABOVE FINISHED FLOOR
▽	DATA: 4S BOX WITH SINGLE GANG MUD RING UON, +18" AFF UON	⊕	HALF SWITCHED DUPLEX: 20A, 125V, NEMA 5-20, +18" AFF (TOP HALF SWITCHED)	AIC	AMPERES INTERRUPTING CAPACITY
▽	VOICE/DATA: 4S BOX WITH SINGLE GANG MUD RING UON, +18" AFF UON	⊕	DUPLEX GFCI: 20A, 125V, GFCI, NEMA 5-20 GFR, +18" AFF	AFC	ABOVE FINISH CEILING
▽	TELEVISION: 4S BOX WITH SINGLE GANG MUD RING UON, +18" AFF UON	⊕	DUPLEX I.G.: 20A, 125V, ISO. GND., NEMA 5-20 IG +18" AFF (WHITE WITH ORANGE TRIANGLE, UON)	BMS	BUILDING MANAGEMENT SYSTEM
▽	CAMERA: 4S BOX WITH SINGLE GANG MUD RING UON, CEILING MOUNTED UON	⊕	DOUBLE DUPLEX I.G.: 20A, 125V, ISO. GND., NEMA 5-20 IG +18" AFF (WHITE WITH ORANGE TRIANGLE, UON)	C	CONDUIT
▽	MICROPHONE: 4S BOX WITH SINGLE GANG MUD RING UON, +18" AFF UON	⊕	SPECIAL RECEPTACLE - AS INDICATED ON PLANS, +18" AFF	CB	CIRCUIT BREAKER
▽	VOLUME CONTROL: 4S BOX WITH SINGLE GANG MUD RING UON, +48" TO TOP UON	⊕	NOTE: DIAMOND SYMBOLS INDICATES DEDICATED CIRCUIT.	CLG	CEILING
▽	SPEAKER: 8" COAXIAL WITH BACK BOX AND GRILLE, CEILING MOUNTED UON	⊕		CIR	CIRCUIT
▽	3/4" (UON) STUB INTO ACCESSIBLE CEILING SPACE	⊕		DPDT	DOUBLE POLE DOUBLE THROW
SWITCHES		EQUIPMENT		DPST	DOUBLE POLE SINGLE THROW
S	SINGLE POLE: 20A, 120/277V, +48" TO TOP UON	⊕	SWITCHBOARD	(E)	EXISTING TO REMAIN
S ₂	TWO POLE: 20A, 120/277V, +48" TO TOP UON	⊕	PANELBOARD: SURFACE MOUNTED	ELEV	ELEVATOR
S ₃	THREE WAY: 20A, 120/277V, +48" TO TOP UON	⊕	PANELBOARD: FLUSH MOUNTED	EMT	ELECTRICAL METALLIC TUBING
S ₄	FOUR WAY: 20A, 120/277V, +48" TO TOP UON	⊕	TRANSFORMER	EPO	EMERGENCY POWER OFF SYSTEM
S _x	X INDICATES EMERGENCY CIRCUIT	⊕	RELAY (120V COIL, STEP DN XFMR IF REQUIRED, UON)	FBO	FURNISHED BY OTHERS
S _p	P INDICATES PILOT LIGHT (LIGHTED WHEN ON)	⊕	CONTACTOR (120V COIL, STEP DN XFMR IF REQUIRED, UON)	FPEN	FUSE PER EQUIPMENT NAMEPLATE
S _l	L INDICATES PILOT LOCATOR (LIGHTED WHEN OFF)	⊕	COMBINATION MAGNETIC STARTER/FUSED DISCONNECT	FLUOR	FLUORESCENT
S _k	K INDICATES KEY OPERATED SWITCH	⊕	NON-FUSIBLE DISCONNECT SWITCH	FU	FUSE: DUAL-ELEMENT, TIME DELAY
S _w	MANUAL MOTOR STARTER: 20A, 120/277V, POLES AND HEATERS AS REQUIRED	⊕	FUSIBLE DISCONNECT SWITCH	GF/GFCI	GROUND FAULT INTERRUPTER
S _{mc}	MOMENTARY CONTACT: 20A, 120/277V, SPDT CENTER NORMALLY OFF UON, +48" TO TOP UON	⊕	PULLBOX: SIZE AS REQUIRED BY NEC	GND	GROUND
D	DIMMER: 600 WATT UON, ELECTRONIC SLIDER, WITH ON/OFF TOGGLE, +48" TO TOP UON (PLANS SHALL INDICATE TYPE: FLUOR, INCAND OR LOW-VOLTAGE)	⊕	JUNCTION BOX: SIZE AS REQUIRED BY NEC	HOA	HAND-OFF-AUTOMATIC
⬇	MOTION/OCCUPANCY SENSOR SWITCH WITH OFF-AUTO SELECTOR - WALL MOUNTED AT +48" TO TOP UON	⊕	SURFACE RACEWAY WITH OR WITHOUT DEVICES	HID	HIGH INTENSITY DISCHARGE
⬇	ULTRASONIC MOTION/OCCUPANCY SENSOR SWITCH CEILING MOUNTED	⊕	TELEPOWER POLE	IG	ISOLATED GROUND
⬇	ARROWS INDICATE DIRECTION AND COVERAGE PROVIDE WITH POWER PACK PER MANUFACTURERS REQUIREMENTS	⊕		INCAND	INCANDESCENT
⬇	PHOTO ELECTRIC SWITCH: 1600VA UON	⊕		K	kcmil (300K = 300 kcmil)
METHODS		⊕		LTG	LIGHTING
⊕	SHADING INDICATES: FIXTURE, OUTLET, EQUIPMENT, ETC. ON EMERGENCY "X" OR NIGHT LIGHT "NL" CIRCUIT	⊕		LV	LOW VOLTAGE
⊕	DEVICE MOUNTED IN MULTIPLE UNDER COMMON COVER MAXIMUM HEIGHT ON WALL SHALL BE +48" TO TOP UON	⊕		MCP	MOTOR CIRCUIT PROTECTOR
⊕	DEVICES MOUNTED IN OR ABOVE COUNTER/BACKSPLASH: MAXIMUM HEIGHT ON WALLS SHALL BE +48" TO TOP UON	⊕		MC	MULTI-CONDUCTOR CABLE
⊕	FLUSH FLOOR MOUNTED WIRING DEVICES	⊕		(N)	NEW
⊕	FLUSH FLOOR MOUNTED WIRING DEVICES IN SINGLE MULTI-COMPARTMENT BOX	⊕		NC	NORMALLY CLOSED
⊕	RECEPTACLE MOUNTED IN CEILING OR CASEWORK	⊕		NEUT	NEUTRAL
⊕	FINE DASHING INDICATES EXISTING EQUIPMENT AND DEVICES TO BE REMOVED	⊕		NL	NIGHT LIGHT
DESIGNATIONS		⊕		NO	NORMALLY OPEN
F1	LIGHT FIXTURE: F1 = TYPE (SEE FIXTURE SCHEDULE)	⊕		NTS	NOT TO SCALE
2	SHEET NOTE	⊕		PNL	PANEL
Δ	REVISION DELTA: NUMBER REPRESENTS REVISION	⊕		PVC	POLYVINYL CHLORIDE CONDUIT
AC	MECHANICAL AND PLUMBING EQUIPMENT	⊕		(R)	EXISTING TO BE RELOCATED
A 5	MISCELLANEOUS: THESE AND OTHER SYMBOLS AS INDICATED IN TABLES AND SCHEDULES ON THE PLANS.	⊕		RAC	RIGID ALUMINUM CONDUIT
NOTE: THIS IS A MASTER SYMBOL LIST, ALL SYMBOLS SHOWN MAY NOT BE USED WITHIN THIS SET OF PLANS		⊕		RSC	RIGID STEEL CONDUIT
		⊕		SLD	SINGLE LINE DIAGRAM
		⊕		SD	SEAL OFF
		⊕		SPDT	SINGLE POLE DOUBLE THROW
		⊕		SPEN	SIZE PER EQUIPMENT NAMEPLATE
		⊕		SPST	SINGLE POLE SINGLE THROW
		⊕		TEL	TELECOM
		⊕		TYP	TYPICAL
		⊕		UNSW	UNSWITCHED
		⊕		UON	UNLESS OTHERWISE NOTED
		⊕		WP	WEATHERPROOF (NEMA 3R)
		⊕		WT	WATERTIGHT
		⊕		(X)	EXISTING TO BE REMOVED
		⊕		XFMR	TRANSFORMER
		⊕		XP	EXPLOSION PROOF



STEWART BUILDING 107
BOILER PLANT RENOVATION
 SPWD 25-M05-07
 5500 SNYDER AVE #107
 CARSON CITY, NEVADA 89701

REVISIONS

DRAWING TITLE

SYMBOL LIST AND SPECIFICATIONS

date	2/24/26
job number	JP# 25189
drawn	MT
checked	J5

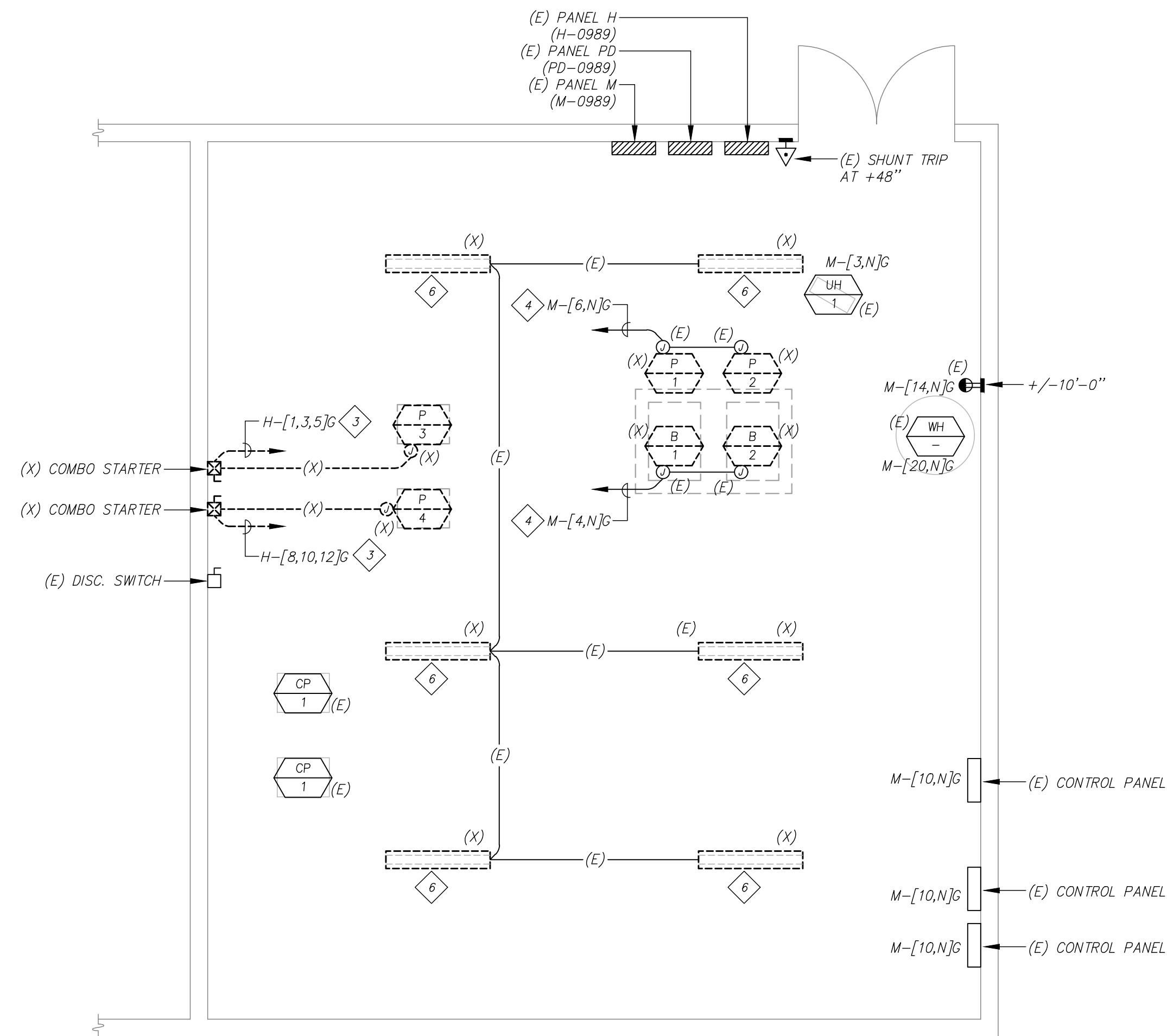
EOI

GENERAL NOTES

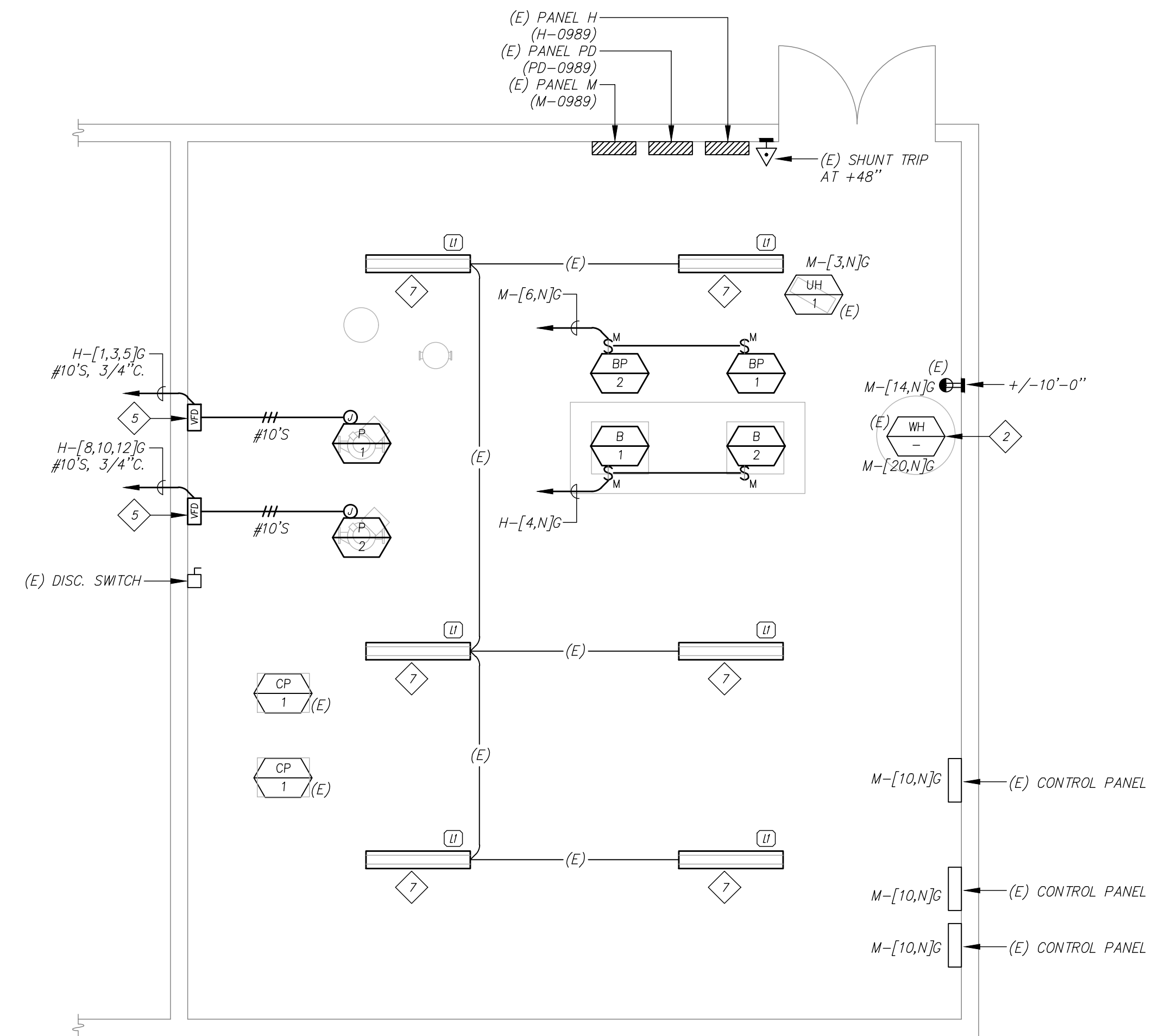
1. ELECTRICAL DEVICES INDICATED WITH (E) ARE CONSIDERED TO BE EXISTING TO REMAIN. ALL EXISTING ELECTRICAL DEVICES TO REMAIN DURING THE COURSE OF CONSTRUCTION SHALL BE PROTECTED FROM DAMAGE AND REMAIN IN OPERATIONAL ORDER THROUGHOUT.

SHEET NOTES

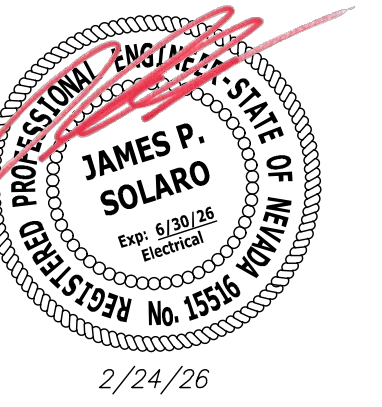
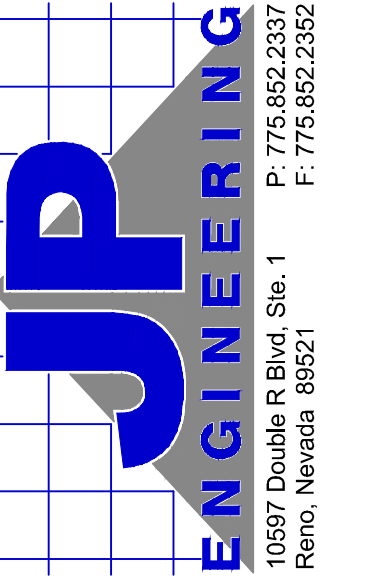
1. ROUTE BOILER BRANCH CIRCUITING THROUGH EXISTING SHUNT TRIP EMERGENCY SHUT-DOWN CONTROL. REFER TO 2/M3.1 FOR SHUNT TRIP DIAGRAM AND REQUIREMENTS.
2. ROUTE EXISTING WATER HEATER BRANCH CIRCUITING THROUGH EXISTING SHUNT TRIP EMERGENCY SHUT-DOWN CONTROL. REFER TO 2/M3.1 FOR SHUNT TRIP DIAGRAM AND REQUIREMENTS.
3. REMOVE EXISTING BRANCH CIRCUIT IN ITS ENTIRETY BACK TO THEIR SOURCE.
4. MAINTAIN CONTINUITY OF EXISTING BRANCH CIRCUITING FOR REUSE DURING NEW CONSTRUCTION.
5. REFER TO MECHANICAL ENGINEERS DRAWINGS FOR ELECTRICAL REQUIREMENTS AND SPECIFICATIONS OF VARIABLE FREQUENCY DRIVES. VFD TO BE PROVIDED AND INSTALLED BY MECHANICAL CONTRACTOR. ELECTRICAL CONNECTION TO BE BY ELECTRICAL CONTRACTOR.
6. REMOVE EXISTING LIGHT FIXTURE, MAINTAIN CONTINUITY OF EXISTING BRANCH CIRCUITING FOR REUSE DURING NEW CONSTRUCTION.
7. UTILIZE EXISTING BRANCH CIRCUITING AND CONTROLS FOR CONNECTION OF NEW LIGHT FIXTURES. LIGHT FIXTURES SHALL BE INSTALLED IN THE EXISTING LOCATION OF THE LIGHT FIXTURES TO BE REMOVED.



B	ENLARGED ELECTRICAL DEMOLITION PLAN	
E2.1	SCALE: 1/4" = 1'-0"	



A	ENLARGED ELECTRICAL NEW WORK PLAN	
E2.1	SCALE: 1/4" = 1'-0"	



STEWART BUILDING 107
BOILER PLANT RENOVATION
 SPWD 25-M05-07
 5500 SNYDER AVE #107
 CARSON CITY, NEVADA 89701

REVISIONS

DRAWING TITLE

ENLARGED ELECTRICAL PLAN

date	2/24/26
job number	JP# 25189
drawn	MT
checked	J5

E2.1